

MAG Polyclonal Antibody

Catalog No: #41887



Package Size: #41887-1 50ul #41887-2 100ul

Orders: order@signalwayantibody.comSupport: tech@signalwayantibody.com

Description

Product Name	MAG Polyclonal Antibody
Host Species	Rabbit
Clonality	Polyclonal
Purification	The antibody was affinity-purified from rabbit antiserum by affinity-chromatography using epitope-specific immunogen.
Applications	WB ELISA
Species Reactivity	Hu Ms Rt
Specificity	MAG Polyclonal Antibody detects endogenous levels of MAG protein.
Immunogen Type	peptide
Immunogen Description	Synthesized peptide derived from the C-terminal region of human MAG.
Target Name	MAG
Other Names	MAG; GMA; Myelin-associated glycoprotein; Siglec-4a
Accession No.	Swiss-Prot: P20916NCBI Gene ID: 4099
SDS-PAGE MW	34kd
Concentration	1mg/ml
Formulation	Liquid in PBS containing 50% glycerol, 0.5% BSA and 0.02% sodium azide.
Storage	Store at -20°C/1 year

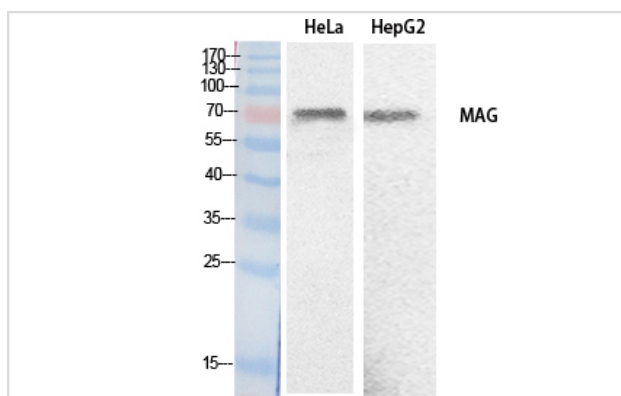
Application Details

Western Blot: 1/500 - 1/2000.

ELISA: 1/20000.

Not yet tested in other applications.

Images



Western Blot analysis of HeLa HepG2 cells using MAG Polyclonal Antibody

Note: This product is for in vitro research use only and is not intended for use in humans or animals.