

TERT Polyclonal Antibody

Catalog No: #41884

Package Size: #41884-1 50ul #41884-2 100ul

Orders: order@signalwayantibody.comSupport: tech@signalwayantibody.com

Description

| | |
|-----------------------|--|
| Product Name | TERT Polyclonal Antibody |
| Host Species | Rabbit |
| Clonality | Polyclonal |
| Purification | The antibody was affinity-purified from rabbit antiserum by affinity-chromatography using epitope-specific immunogen. |
| Applications | WB ELISA |
| Species Reactivity | Hu |
| Specificity | TERT Polyclonal Antibody detects endogenous levels of TERT protein. |
| Immunogen Type | peptide |
| Immunogen Description | Synthesized peptide derived from the C-terminal region of human TERT. |
| Target Name | TERT |
| Other Names | TERT; EST2; TCS1; TRT; Telomerase reverse transcriptase; HEST2; Telomerase catalytic subunit; Telomerase-associated protein 2; TP2 |
| Accession No. | Swiss-Prot: O14746NCBI Gene ID: 7015 |
| SDS-PAGE MW | 30kd |
| Concentration | 1mg/ml |
| Formulation | Liquid in PBS containing 50% glycerol, 0.5% BSA and 0.02% sodium azide. |
| Storage | Store at -20°C/1 year |

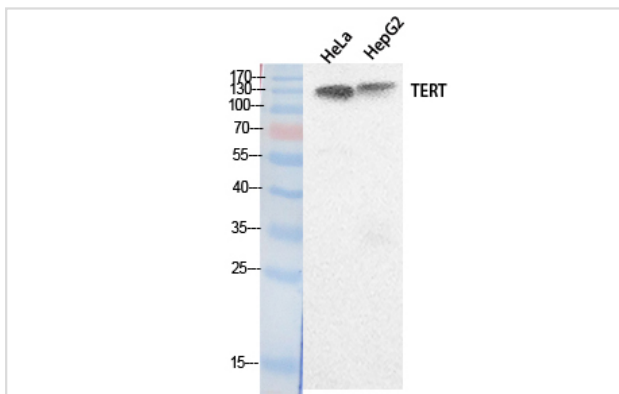
Application Details

Western Blot: 1/500 - 1/2000.

ELISA: 1/20000.

Not yet tested in other applications.

Images



Western Blot analysis of HeLa HepG2 cells using TERT Polyclonal Antibody

Note: This product is for in vitro research use only and is not intended for use in humans or animals.