

## TRAIL Polyclonal Antibody

Catalog No: #41881

Package Size: #41881-1 50ul #41881-2 100ul

Orders: [order@signalwayantibody.com](mailto:order@signalwayantibody.com)Support: [tech@signalwayantibody.com](mailto:tech@signalwayantibody.com)

## Description

Product Name	TRAIL Polyclonal Antibody
Host Species	Rabbit
Clonality	Polyclonal
Purification	The antibody was affinity-purified from rabbit antiserum by affinity-chromatography using epitope-specific immunogen.
Applications	WB ELISA
Species Reactivity	Hu
Specificity	TRAIL Polyclonal Antibody detects endogenous levels of TRAIL protein.
Immunogen Type	peptide
Immunogen Description	Synthesized peptide derived from the Internal region of human TRAIL.
Target Name	TRAIL
Other Names	TNFSF10; APO2L; TRAIL; Tumor necrosis factor ligand superfamily member 10; Apo-2 ligand; Apo-2L; TNF-related apoptosis-inducing ligand; Protein TRAIL; CD253
Accession No.	Swiss-Prot: P50591NCBI Gene ID: 8743
SDS-PAGE MW	45kd
Concentration	1mg/ml
Formulation	Liquid in PBS containing 50% glycerol, 0.5% BSA and 0.02% sodium azide.
Storage	Store at -20°C/1 year

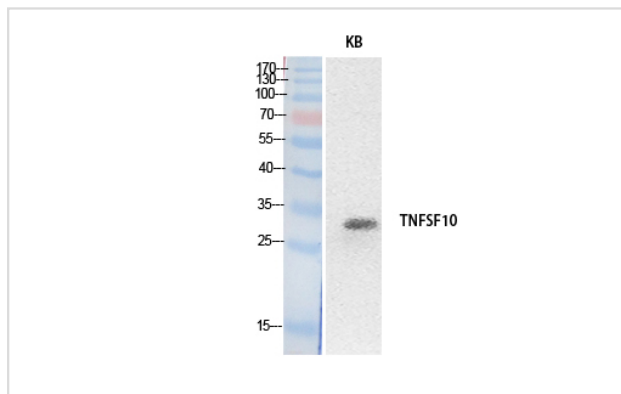
## Application Details

Western Blot: 1/500 - 1/2000.

ELISA: 1/20000.

Not yet tested in other applications.

## Images



Western Blot analysis of KB cells using TRAIL Polyclonal Antibody

---

Note: This product is for in vitro research use only and is not intended for use in humans or animals.