

SRY Polyclonal Antibody

Catalog No: #41868



Package Size: #41868-1 50ul #41868-2 100ul

Orders: order@signalwayantibody.comSupport: tech@signalwayantibody.com

Description

Product Name	SRY Polyclonal Antibody
Host Species	Rabbit
Clonality	Polyclonal
Purification	The antibody was affinity-purified from rabbit antiserum by affinity-chromatography using epitope-specific immunogen.
Applications	WB ELISA
Species Reactivity	Hu
Specificity	SRY Polyclonal Antibody detects endogenous levels of SRY protein.
Immunogen Type	peptide
Immunogen Description	Synthesized peptide derived from the Internal region of human SRY.
Target Name	SRY
Other Names	SRY; TDF; Sex-determining region Y protein; Testis-determining factor
Accession No.	Swiss-Prot: Q05066NCBI Gene ID: 6736
SDS-PAGE MW	15kd
Concentration	1mg/ml
Formulation	Liquid in PBS containing 50% glycerol, 0.5% BSA and 0.02% sodium azide.
Storage	Store at -20°C/1 year

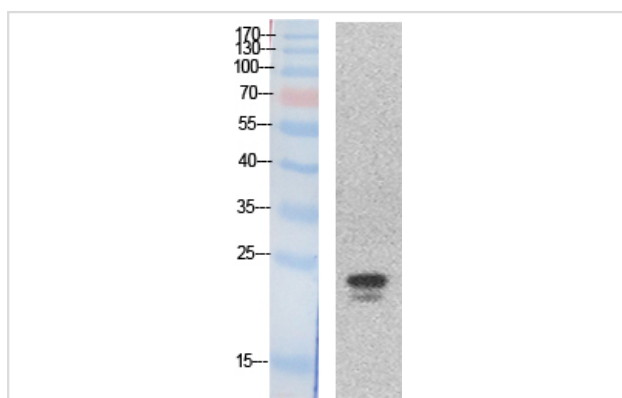
Application Details

Western Blot: 1/500 - 1/2000.

ELISA: 1/20000.

Not yet tested in other applications.

Images



Western Blot analysis of HeLa cells using SRY Polyclonal Antibody

Note: This product is for in vitro research use only and is not intended for use in humans or animals.