

# Cerberus Polyclonal Antibody

Catalog No: #41795



Package Size: #41795-1 50ul #41795-2 100ul

Orders: [order@signalwayantibody.com](mailto:order@signalwayantibody.com)Support: [tech@signalwayantibody.com](mailto:tech@signalwayantibody.com)

## Description

Product Name	Cerberus Polyclonal Antibody
Host Species	Rabbit
Clonality	Polyclonal
Purification	The antibody was affinity-purified from rabbit antiserum by affinity-chromatography using epitope-specific immunogen.
Applications	WB ELISA
Species Reactivity	Hu Rt
Specificity	Cerberus Polyclonal Antibody detects endogenous levels of Cerberus protein.
Immunogen Type	peptide
Immunogen Description	Synthesized peptide derived from the Internal region of human Cerberus.
Target Name	Cerberus
Other Names	CER1; DAND4; Cerberus; Cerberus-related protein; DAN domain family member 4
Accession No.	Swiss-Prot: O95813NCBI Gene ID: 9350
SDS-PAGE MW	50kd
Concentration	1mg/ml
Formulation	Liquid in PBS containing 50% glycerol, 0.5% BSA and 0.02% sodium azide.
Storage	Store at -20°C/1 year

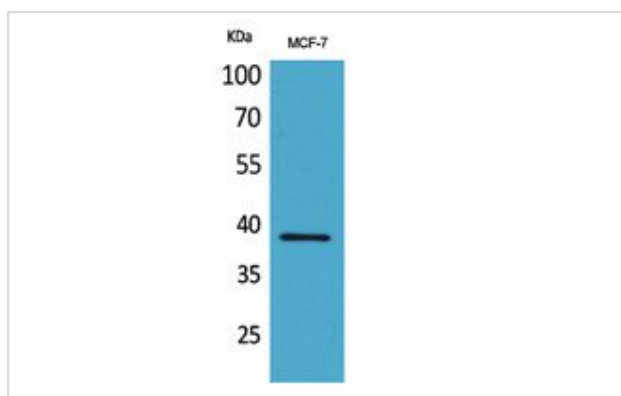
## Application Details

Western Blot: 1/500 - 1/2000.

ELISA: 1/20000.

Not yet tested in other applications.

## Images



Western Blot analysis of MCF-7 cells using Cerberus Polyclonal Antibody.

---

Note: This product is for in vitro research use only and is not intended for use in humans or animals.