

Bonzo Polyclonal Antibody

Catalog No: #41783



Package Size: #41783-1 50ul #41783-2 100ul

Orders: order@signalwayantibody.comSupport: tech@signalwayantibody.com

Description

| | |
|-----------------------|---|
| Product Name | Bonzo Polyclonal Antibody |
| Host Species | Rabbit |
| Clonality | Polyclonal |
| Purification | The antibody was affinity-purified from rabbit antiserum by affinity-chromatography using epitope-specific immunogen. |
| Applications | WB ELISA |
| Species Reactivity | Hu |
| Specificity | Bonzo Polyclonal Antibody detects endogenous levels of Bonzo protein. |
| Immunogen Type | peptide |
| Immunogen Description | Synthesized peptide derived from the N-terminal region of human Bonzo. |
| Target Name | Bonzo |
| Other Names | CXCR6; BONZO; STRL33; TYMSTR; C-X-C chemokine receptor type 6; CXC-R6; CXCR-6; CDw186; G-protein coupled receptor STRL33; G-protein coupled receptor bonzo; CD186 |
| Accession No. | Swiss-Prot: O00574NCBI Gene ID: 10663 |
| SDS-PAGE MW | 38kd |
| Concentration | 1mg/ml |
| Formulation | Liquid in PBS containing 50% glycerol, 0.5% BSA and 0.02% sodium azide. |
| Storage | Store at -20°C/1 year |

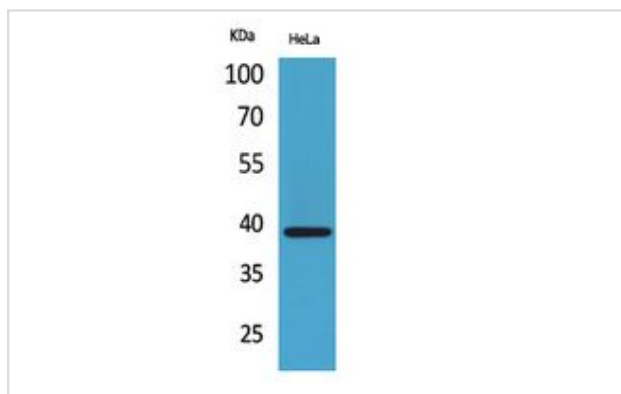
Application Details

Western Blot: 1/500 - 1/2000.

ELISA: 1/20000.

Not yet tested in other applications.

Images



Western Blot analysis of HeLa cells using Bonzo Polyclonal Antibody.

Note: This product is for in vitro research use only and is not intended for use in humans or animals.