

Autotaxin Polyclonal Antibody

Catalog No: #41748



Package Size: #41748-1 50ul #41748-2 100ul

Orders: order@signalwayantibody.comSupport: tech@signalwayantibody.com

Description

Product Name	Autotaxin Polyclonal Antibody
Host Species	Rabbit
Clonality	Polyclonal
Purification	The antibody was affinity-purified from rabbit antiserum by affinity-chromatography using epitope-specific immunogen.
Applications	WB ELISA
Species Reactivity	Hu Ms Rt
Specificity	Autotaxin Polyclonal Antibody detects endogenous levels of Autotaxin protein.
Immunogen Type	peptide
Immunogen Description	Synthesized peptide derived from the Internal region of human Autotaxin.
Target Name	Autotaxin
Other Names	ENPP2; ATX; PDNP2; Ectonucleotide pyrophosphatase/phosphodiesterase family member 2; E-NPP 2; Autotaxin; Extracellular lysophospholipase D; LysoPLD
Accession No.	Swiss-Prot: Q13822NCBI Gene ID: 5168
SDS-PAGE MW	57kd
Concentration	1mg/ml
Formulation	Liquid in PBS containing 50% glycerol, 0.5% BSA and 0.02% sodium azide.
Storage	Store at -20°C/1 year

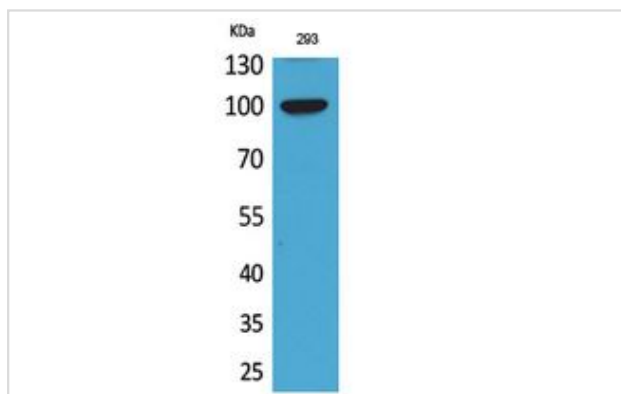
Application Details

Western Blot: 1/500 - 1/2000.

ELISA: 1/20000.

Not yet tested in other applications.

Images



Western Blot analysis of 293 cells using Autotaxin Polyclonal Antibody.

Note: This product is for in vitro research use only and is not intended for use in humans or animals.