

MPO Polyclonal Antibody

Catalog No: #41742



Package Size: #41742-1 50ul #41742-2 100ul

Orders: order@signalwayantibody.comSupport: tech@signalwayantibody.com

Description

Product Name	MPO Polyclonal Antibody
Host Species	Rabbit
Clonality	Polyclonal
Purification	The antibody was affinity-purified from rabbit antiserum by affinity-chromatography using epitope-specific immunogen.
Applications	WB ELISA
Species Reactivity	Hu Ms Rt
Specificity	MPO Polyclonal Antibody detects endogenous levels of MPO protein.
Immunogen Type	peptide
Immunogen Description	Synthesized peptide derived from the N-terminal region of human MPO.
Target Name	MPO
Other Names	MPO; Myeloperoxidase; MPO
Accession No.	Swiss-Prot: P05164NCBI Gene ID: 4353
SDS-PAGE MW	56kd
Concentration	1mg/ml
Formulation	Liquid in PBS containing 50% glycerol, 0.5% BSA and 0.02% sodium azide.
Storage	Store at -20°C/1 year

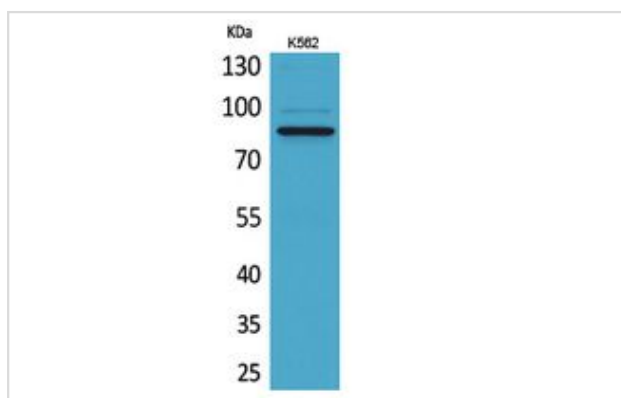
Application Details

Western Blot: 1/500 - 1/2000.

ELISA: 1/20000.

Not yet tested in other applications.

Images



Western Blot analysis of K562 cells using MPO Polyclonal Antibody.

Note: This product is for in vitro research use only and is not intended for use in humans or animals.