

MK Polyclonal Antibody

Catalog No: #41586



Package Size: #41586-1 50ul #41586-2 100ul

Orders: order@signalwayantibody.com

Support: tech@signalwayantibody.com

Description

Product Name	MK Polyclonal Antibody
Host Species	Rabbit
Clonality	Polyclonal
Purification	The antibody was affinity-purified from rabbit antiserum by affinity-chromatography using epitope-specific immunogen.
Applications	WB ELISA
Species Reactivity	Hu Rt
Specificity	MK Polyclonal Antibody detects endogenous levels of MK protein.
Immunogen Type	peptide
Immunogen Description	Synthesized peptide derived from the Internal region of human MK.
Target Name	MK
Other Names	MDK; MK1; NEGF2; Midkine; MK; Amphiregulin-associated protein; ARAP; Midgestation and kidney protein; Neurite outgrowth-promoting factor 2; Neurite outgrowth-promoting protein
Accession No.	Swiss-Prot: P21741NCBI Gene ID: 4192
SDS-PAGE MW	28kd
Concentration	1mg/ml
Formulation	Liquid in PBS containing 50% glycerol, 0.5% BSA and 0.02% sodium azide.
Storage	Store at -20°C/1 year

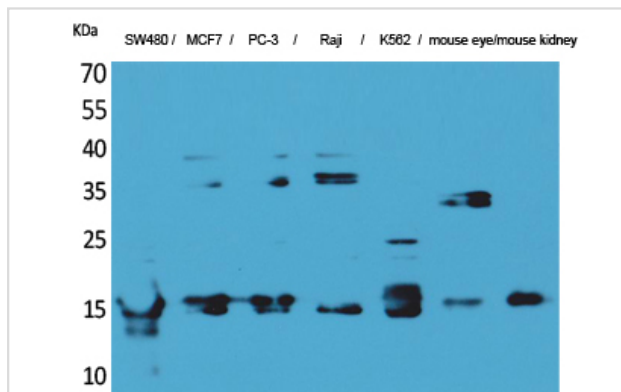
Application Details

Western Blot: 1/500 - 1/2000.

ELISA: 1/20000.

Not yet tested in other applications.

Images



Western Blot analysis of SW480 MCF7 PC-3 Raji K562 mouse eye mouse kidney cells using MK Polyclonal Antibody

Note: This product is for in vitro research use only and is not intended for use in humans or animals.