

Amylase Polyclonal Antibody

Catalog No: #41575



Package Size: #41575-1 50ul #41575-2 100ul

Orders: order@signalwayantibody.comSupport: tech@signalwayantibody.com

Description

| | |
|-----------------------|---|
| Product Name | Amylase Polyclonal Antibody |
| Host Species | Rabbit |
| Clonality | Polyclonal |
| Purification | The antibody was affinity-purified from rabbit antiserum by affinity-chromatography using epitope-specific immunogen. |
| Applications | WB ELISA |
| Species Reactivity | Hu Ms Rt |
| Specificity | Amylase Polyclonal Antibody detects endogenous levels of Amylase protein. |
| Immunogen Type | peptide |
| Immunogen Description | Synthesized peptide derived from the N-terminal region of human Amylase. |
| Target Name | Amylase |
| Other Names | AMY1A; AMY1; AMY1B; AMY1; AMY1C; AMY1; Alpha-amylase 1; 1,4-alpha-D-glucan glucanohydrolase 1; Salivary alpha-amylase; AMY2A; Pancreatic alpha-amylase; PA; |
| Accession No. | Swiss-Prot: P04745NCBI Gene ID: 276 |
| SDS-PAGE MW | 26kd |
| Concentration | 1mg/ml |
| Formulation | Liquid in PBS containing 50% glycerol, 0.5% BSA and 0.02% sodium azide. |
| Storage | Store at -20°C/1 year |

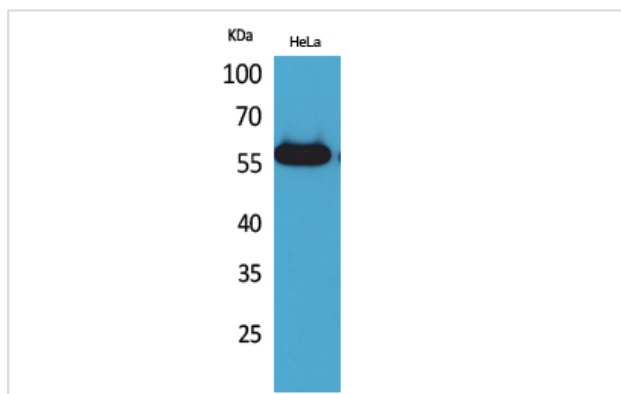
Application Details

Western Blot: 1/500 - 1/2000.

ELISA: 1/20000.

Not yet tested in other applications.

Images



Western Blot analysis of HeLa cells using Amylase Polyclonal Antibody

Note: This product is for in vitro research use only and is not intended for use in humans or animals.