

Hrs Polyclonal Antibody

Catalog No: #41566



Package Size: #41566-1 50ul #41566-2 100ul

Orders: order@signalwayantibody.comSupport: tech@signalwayantibody.com

Description

Product Name	Hrs Polyclonal Antibody
Host Species	Rabbit
Clonality	Polyclonal
Purification	The antibody was affinity-purified from rabbit antiserum by affinity-chromatography using epitope-specific immunogen.
Applications	WB ELISA
Species Reactivity	Hu Ms Rt
Specificity	Hrs Polyclonal Antibody detects endogenous levels of Hrs protein.
Immunogen Type	peptide
Immunogen Description	Synthesized peptide derived from the Internal region of human Hrs.
Target Name	Hrs
Other Names	HGS; HRS; Hepatocyte growth factor-regulated tyrosine kinase substrate; Hrs; Protein pp110
Accession No.	Swiss-Prot: O14964NCBI Gene ID: 9146
SDS-PAGE MW	55kd
Concentration	1mg/ml
Formulation	Liquid in PBS containing 50% glycerol, 0.5% BSA and 0.02% sodium azide.
Storage	Store at -20°C/1 year

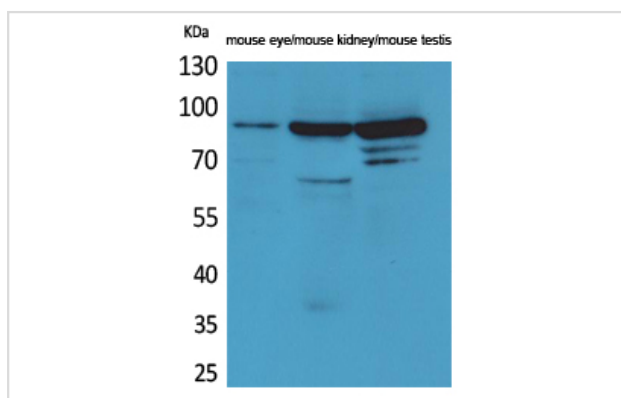
Application Details

Western Blot: 1/500 - 1/2000.

ELISA: 1/20000.

Not yet tested in other applications.

Images



Western Blot analysis of mouse eye mouse kidney mouse testis cells using Hrs Polyclonal Antibody

Note: This product is for in vitro research use only and is not intended for use in humans or animals.