

## XPA Polyclonal Antibody

Catalog No: #41537



Package Size: #41537-1 50ul #41537-2 100ul

Orders: [order@signalwayantibody.com](mailto:order@signalwayantibody.com)Support: [tech@signalwayantibody.com](mailto:tech@signalwayantibody.com)

## Description

Product Name	XPA Polyclonal Antibody
Host Species	Rabbit
Clonality	Polyclonal
Purification	The antibody was affinity-purified from rabbit antiserum by affinity-chromatography using epitope-specific immunogen.
Applications	WB IHC ELISA
Species Reactivity	Hu Ms
Specificity	XPA Polyclonal Antibody detects endogenous levels of XPA protein.
Immunogen Type	peptide
Immunogen Description	Synthesized peptide derived from the C-terminal region of human XPA.
Target Name	XPA
Other Names	XPA; XPAC; DNA repair protein complementing XP-A cells; Xeroderma pigmentosum group A-complementing protein
Accession No.	Swiss-Prot: P23025NCBI Gene ID: 7507
SDS-PAGE MW	85kd
Concentration	1mg/ml
Formulation	Liquid in PBS containing 50% glycerol, 0.5% BSA and 0.02% sodium azide.
Storage	Store at -20°C/1 year

## Application Details

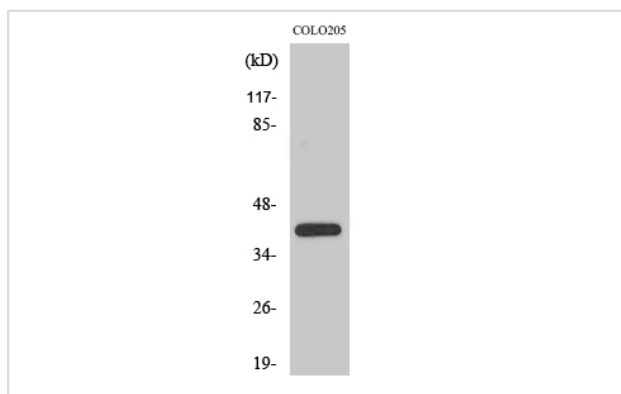
Western Blot: 1/500 - 1/2000.

Immunohistochemistry: 1/100 - 1/300.

ELISA: 1/10000.

Not yet tested in other applications.

## Images



Western Blot analysis of COLO205 cells using XPA Polyclonal Antibody

---

Note: This product is for in vitro research use only and is not intended for use in humans or animals.