

## VIM Polyclonal Antibody

Catalog No: #41531



Package Size: #41531-1 50ul #41531-2 100ul

Orders: [order@signalwayantibody.com](mailto:order@signalwayantibody.com)Support: [tech@signalwayantibody.com](mailto:tech@signalwayantibody.com)

## Description

Product Name	VIM Polyclonal Antibody
Host Species	Rabbit
Clonality	Polyclonal
Purification	The antibody was affinity-purified from rabbit antiserum by affinity-chromatography using epitope-specific immunogen.
Applications	WB IHC IF ELISA
Species Reactivity	Hu Ms Rt
Specificity	VIM Polyclonal Antibody detects endogenous levels of VIM protein.
Immunogen Type	peptide
Immunogen Description	Synthesized peptide derived from the C-terminal region of human VIM.
Target Name	VIM
Other Names	VIM; Vimentin
Accession No.	Swiss-Prot: P08670NCBI Gene ID: 7431
SDS-PAGE MW	45kd
Concentration	1mg/ml
Formulation	Liquid in PBS containing 50% glycerol, 0.5% BSA and 0.02% sodium azide.
Storage	Store at -20°C/1 year

## Application Details

Western Blot: 1/500 - 1/2000.

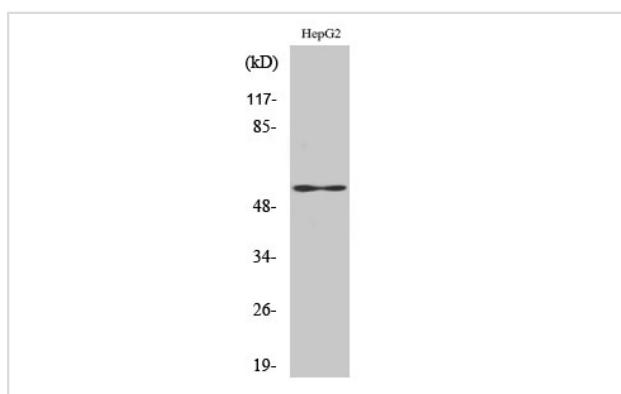
Immunohistochemistry: 1/100 - 1/300.

Immunofluorescence: 1/200 - 1/1000.

ELISA: 1/10000.

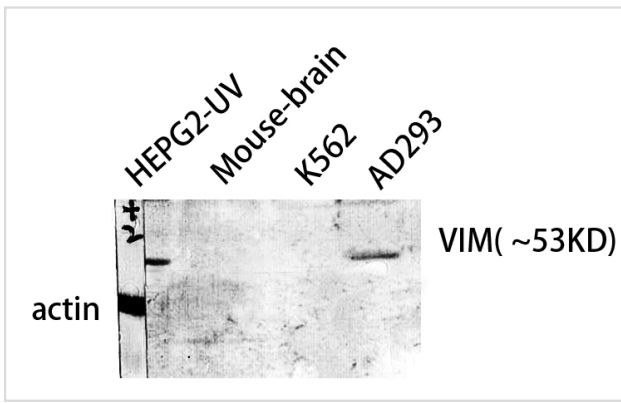
Not yet tested in other applications.

## Images



Western Blot analysis of HepG2 cells using VIM Polyclonal Antibody

Western Blot analysis of HepG2-UV MOUSE-BRAIN AD293  
K562 cells using VIM Polyclonal Antibody



Note: This product is for in vitro research use only and is not intended for use in humans or animals.