

TNF- β Polyclonal Antibody

Catalog No: #41505



Package Size: #41505-1 50ul #41505-2 100ul

Orders: order@signalwayantibody.comSupport: tech@signalwayantibody.com

Description

| | |
|-----------------------|---|
| Product Name | TNF- β Polyclonal Antibody |
| Host Species | Rabbit |
| Clonality | Polyclonal |
| Purification | The antibody was affinity-purified from rabbit antiserum by affinity-chromatography using epitope-specific immunogen. |
| Applications | WB ELISA |
| Species Reactivity | Hu Ms Rt Mk |
| Specificity | TNF- β Polyclonal Antibody detects endogenous levels of TNF- β protein. |
| Immunogen Type | peptide |
| Immunogen Description | Synthesized peptide derived from the Internal region of human TNF- β . |
| Target Name | TNF- β |
| Other Names | LTA; TNFB; TNFSF1; Lymphotoxin-alpha; LT-alpha; TNF-beta; Tumor necrosis factor ligand superfamily member 1 |
| Accession No. | Swiss-Prot: P01374NCBI Gene ID: 4049 |
| SDS-PAGE MW | 33kd |
| Concentration | 1mg/ml |
| Formulation | Liquid in PBS containing 50% glycerol, 0.5% BSA and 0.02% sodium azide. |
| Storage | Store at -20°C/1 year |

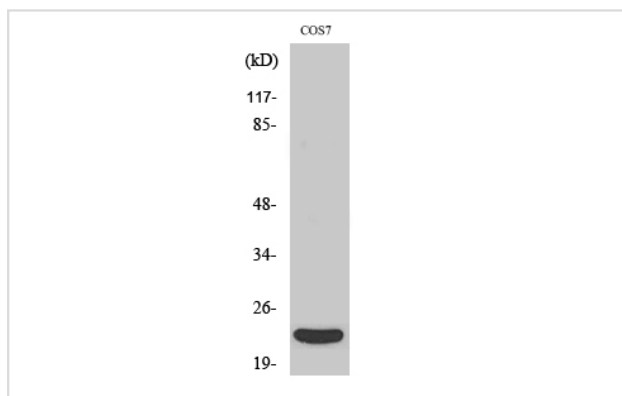
Application Details

Western Blot: 1/500 - 1/2000.

ELISA: 1/40000.

Not yet tested in other applications.

Images

Western Blot analysis of COS7 cells using TNF- β Polyclonal Antibody

Note: This product is for in vitro research use only and is not intended for use in humans or animals.