

TH Polyclonal Antibody

Catalog No: #41497



Package Size: #41497-1 50ul #41497-2 100ul

Orders: order@signalwayantibody.comSupport: tech@signalwayantibody.com

Description

Product Name	TH Polyclonal Antibody
Host Species	Rabbit
Clonality	Polyclonal
Purification	The antibody was affinity-purified from rabbit antiserum by affinity-chromatography using epitope-specific immunogen.
Applications	WB IHC IF ELISA
Species Reactivity	Hu Ms Rt
Specificity	TH Polyclonal Antibody detects endogenous levels of TH protein.
Immunogen Type	peptide
Immunogen Description	Synthesized peptide derived from human TH around the non-phosphorylation site of S19.
Target Name	TH
Other Names	TH; TYH; Tyrosine 3-monooxygenase; Tyrosine 3-hydroxylase; TH
Accession No.	Swiss-Prot: P07101NCBI Gene ID: 7054
SDS-PAGE MW	25kd
Concentration	1mg/ml
Formulation	Liquid in PBS containing 50% glycerol, 0.5% BSA and 0.02% sodium azide.
Storage	Store at -20°C/1 year

Application Details

Western Blot: 1/500 - 1/2000.

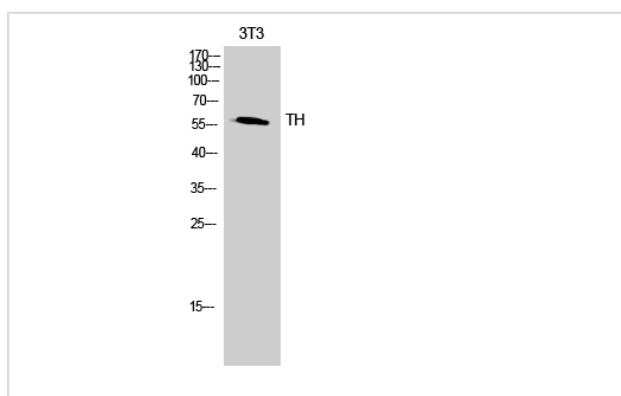
Immunohistochemistry: 1/100 - 1/300.

Immunofluorescence: 1/200 - 1/1000.

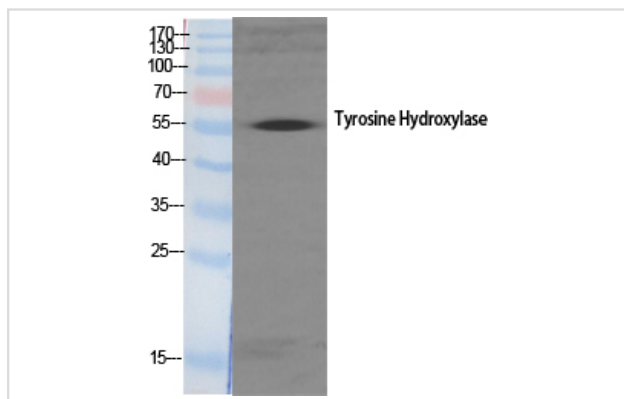
ELISA: 1/10000.

Not yet tested in other applications.

Images



Western Blot analysis of 3T3 cells using TH Polyclonal Antibody



Western Blot analysis of 293 cells using TH Polyclonal Antibody

Note: This product is for in vitro research use only and is not intended for use in humans or animals.