

## SYP Polyclonal Antibody

Catalog No: #41475



Package Size: #41475-1 50ul #41475-2 100ul

Orders: [order@signalwayantibody.com](mailto:order@signalwayantibody.com)Support: [tech@signalwayantibody.com](mailto:tech@signalwayantibody.com)

## Description

Product Name	SYP Polyclonal Antibody
Host Species	Rabbit
Clonality	Polyclonal
Purification	The antibody was affinity-purified from rabbit antiserum by affinity-chromatography using epitope-specific immunogen.
Applications	WB IHC ELISA
Species Reactivity	Hu Ms Rt
Specificity	SYP Polyclonal Antibody detects endogenous levels of SYP protein.
Immunogen Type	peptide
Immunogen Description	Synthesized peptide derived from the Internal region of human SYP.
Target Name	SYP
Other Names	SYP; Synaptophysin; Major synaptic vesicle protein p38
Accession No.	Swiss-Prot: P08247NCBI Gene ID: 6855
SDS-PAGE MW	79kd
Concentration	1mg/ml
Formulation	Liquid in PBS containing 50% glycerol, 0.5% BSA and 0.02% sodium azide.
Storage	Store at -20°C/1 year

## Application Details

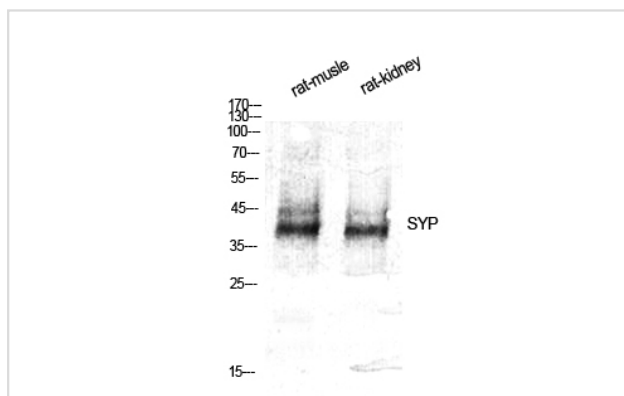
Western Blot: 1/500 - 1/2000.

Immunohistochemistry: 1/100 - 1/300.

ELISA: 1/10000.

Not yet tested in other applications.

## Images



Western Blot analysis of RAT-MUSCLE RAT-KIDNEY cells using SYP Polyclonal Antibody

---

Note: This product is for in vitro research use only and is not intended for use in humans or animals.