

## SRF Polyclonal Antibody

Catalog No: #41459



Package Size: #41459-1 50ul #41459-2 100ul

Orders: [order@signalwayantibody.com](mailto:order@signalwayantibody.com)Support: [tech@signalwayantibody.com](mailto:tech@signalwayantibody.com)

## Description

Product Name	SRF Polyclonal Antibody
Host Species	Rabbit
Clonality	Polyclonal
Purification	The antibody was affinity-purified from rabbit antiserum by affinity-chromatography using epitope-specific immunogen.
Applications	WB IHC ELISA
Species Reactivity	Hu Ms
Specificity	SRF Polyclonal Antibody detects endogenous levels of SRF protein.
Immunogen Type	peptide
Immunogen Description	Synthesized peptide derived from human SRF around the non-phosphorylation site of S77.
Target Name	SRF
Other Names	SRF; Serum response factor; SRF
Accession No.	Swiss-Prot: P11831NCBI Gene ID: 6722
SDS-PAGE MW	84kd
Concentration	1mg/ml
Formulation	Liquid in PBS containing 50% glycerol, 0.5% BSA and 0.02% sodium azide.
Storage	Store at -20°C/1 year

## Application Details

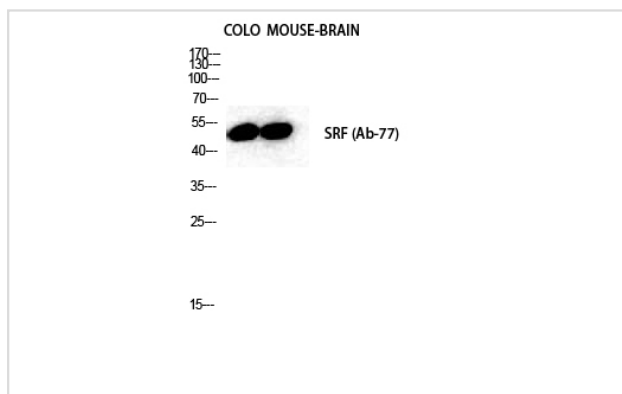
Western Blot: 1/500 - 1/2000.

Immunohistochemistry: 1/100 - 1/300.

ELISA: 1/40000.

Not yet tested in other applications.

## Images



Western Blot analysis of MOUSE-BRAIN COLO cells using SRF Polyclonal Antibody

---

Note: This product is for in vitro research use only and is not intended for use in humans or animals.