

## SnoN Polyclonal Antibody

Catalog No: #41450



Package Size: #41450-1 50ul #41450-2 100ul

Orders: [order@signalwayantibody.com](mailto:order@signalwayantibody.com)Support: [tech@signalwayantibody.com](mailto:tech@signalwayantibody.com)

## Description

Product Name	SnoN Polyclonal Antibody
Host Species	Rabbit
Clonality	Polyclonal
Purification	The antibody was affinity-purified from rabbit antiserum by affinity-chromatography using epitope-specific immunogen.
Applications	WB IHC ELISA
Species Reactivity	Hu Ms
Specificity	SnoN Polyclonal Antibody detects endogenous levels of SnoN protein.
Immunogen Type	peptide
Immunogen Description	Synthesized peptide derived from the C-terminal region of human SnoN.
Target Name	SnoN
Other Names	SKIL; SNO; Ski-like protein; Ski-related oncogene; Ski-related protein
Accession No.	Swiss-Prot: P12757NCBI Gene ID: 6498
SDS-PAGE MW	70B&B-80kd
Concentration	1mg/ml
Formulation	Liquid in PBS containing 50% glycerol, 0.5% BSA and 0.02% sodium azide.
Storage	Store at -20°C/1 year

## Application Details

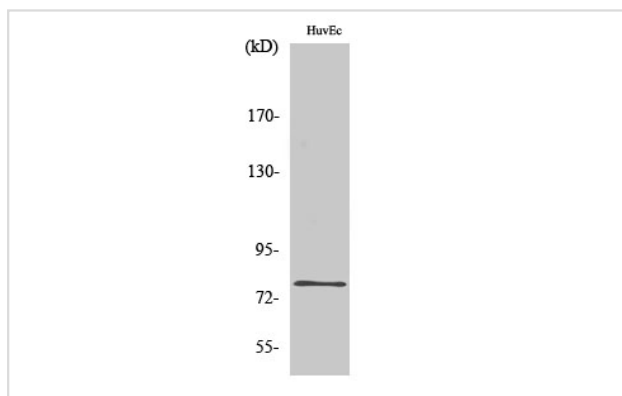
Western Blot: 1/500 - 1/2000.

Immunohistochemistry: 1/100 - 1/300.

ELISA: 1/40000.

Not yet tested in other applications.

## Images



Western Blot analysis of Jurkat cells using SnoN Polyclonal Antibody

---

Note: This product is for in vitro research use only and is not intended for use in humans or animals.