

# SNAI 1 Polyclonal Antibody

Catalog No: #41449



Package Size: #41449-1 50ul #41449-2 100ul

Orders: [order@signalwayantibody.com](mailto:order@signalwayantibody.com)Support: [tech@signalwayantibody.com](mailto:tech@signalwayantibody.com)

## Description

Product Name	SNAI 1 Polyclonal Antibody
Host Species	Rabbit
Clonality	Polyclonal
Purification	The antibody was affinity-purified from rabbit antiserum by affinity-chromatography using epitope-specific immunogen.
Applications	WB IHC IF ELISA
Species Reactivity	Hu Ms Mk
Specificity	SNAI 1 Polyclonal Antibody detects endogenous levels of SNAI 1 protein.
Immunogen Type	peptide
Immunogen Description	Synthesized peptide derived from human SNAI 1 around the non-phosphorylation site of S246.
Target Name	SNAI 1
Other Names	SNAI1; SNAH; Zinc finger protein SNAI1; Protein snail homolog 1; Protein sna
Accession No.	Swiss-Prot: O95863NCBI Gene ID: 6615
SDS-PAGE MW	42kd
Concentration	1mg/ml
Formulation	Liquid in PBS containing 50% glycerol, 0.5% BSA and 0.02% sodium azide.
Storage	Store at -20°C/1 year

## Application Details

Western Blot: 1/500 - 1/2000.

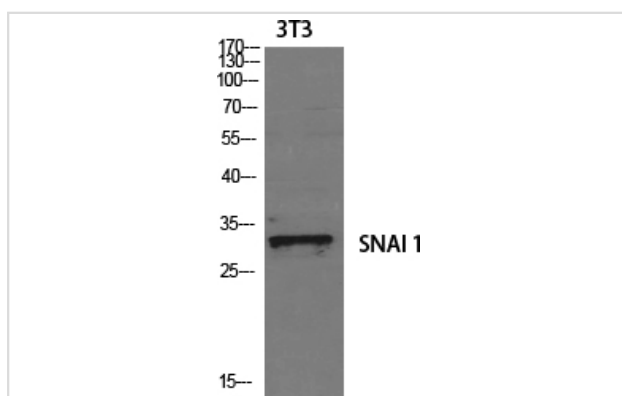
Immunohistochemistry: 1/100 - 1/300.

Immunofluorescence: 1/200 - 1/1000.

ELISA: 1/5000.

Not yet tested in other applications.

## Images



Western Blot analysis of NIH-3T3 cells using SNAI 1 Polyclonal Antibody

---

Note: This product is for in vitro research use only and is not intended for use in humans or animals.