

Seprase Polyclonal Antibody

Catalog No: #41425



Package Size: #41425-1 50ul #41425-2 100ul

Orders: order@signalwayantibody.com

Support: tech@signalwayantibody.com

Description

Product Name	Seprase Polyclonal Antibody
Host Species	Rabbit
Clonality	Polyclonal
Purification	The antibody was affinity-purified from rabbit antiserum by affinity-chromatography using epitope-specific immunogen.
Applications	WB IHC ELISA
Species Reactivity	Hu Ms Rt
Specificity	Seprase Polyclonal Antibody detects endogenous levels of Seprase protein.
Immunogen Type	peptide
Immunogen Description	Synthesized peptide derived from the Internal region of human Seprase.
Target Name	Seprase
Other Names	FAP; Seprase; 170 kDa melanoma membrane-bound gelatinase; Fibroblast activation protein alpha; Integral membrane serine protease
Accession No.	Swiss-Prot: Q12884NCBI Gene ID: 2191
SDS-PAGE MW	57kd
Concentration	1mg/ml
Formulation	Liquid in PBS containing 50% glycerol, 0.5% BSA and 0.02% sodium azide.
Storage	Store at -20°C/1 year

Application Details

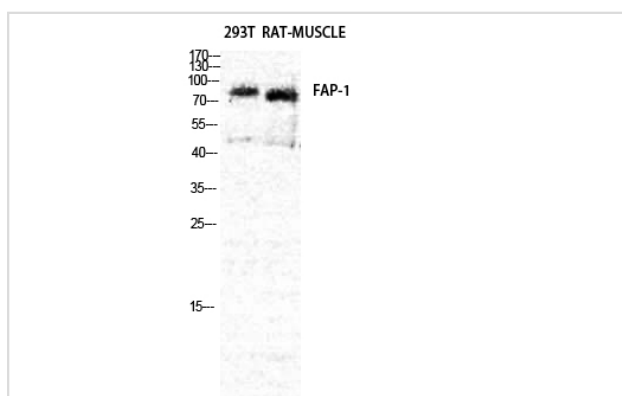
Western Blot: 1/500 - 1/2000.

Immunohistochemistry: 1/100 - 1/300.

ELISA: 1/10000.

Not yet tested in other applications.

Images



Western Blot analysis of RAT-MUSCLE 293T cells using Seprase Polyclonal Antibody

Note: This product is for in vitro research use only and is not intended for use in humans or animals.