

## Radixin Polyclonal Antibody

Catalog No: #41382



Package Size: #41382-1 50ul #41382-2 100ul

Orders: [order@signalwayantibody.com](mailto:order@signalwayantibody.com)Support: [tech@signalwayantibody.com](mailto:tech@signalwayantibody.com)

## Description

Product Name	Radixin Polyclonal Antibody
Host Species	Rabbit
Clonality	Polyclonal
Purification	The antibody was affinity-purified from rabbit antiserum by affinity-chromatography using epitope-specific immunogen.
Applications	WB ELISA
Species Reactivity	Hu Ms Rt
Specificity	Radixin Polyclonal Antibody detects endogenous levels of Radixin protein.
Immunogen Type	peptide
Immunogen Description	Synthesized peptide derived from the Internal region of human Radixin.
Target Name	Radixin
Other Names	RDX; Radixin
Accession No.	Swiss-Prot: P35241NCBI Gene ID: 5962
SDS-PAGE MW	34kd
Concentration	1mg/ml
Formulation	Liquid in PBS containing 50% glycerol, 0.5% BSA and 0.02% sodium azide.
Storage	Store at -20°C/1 year

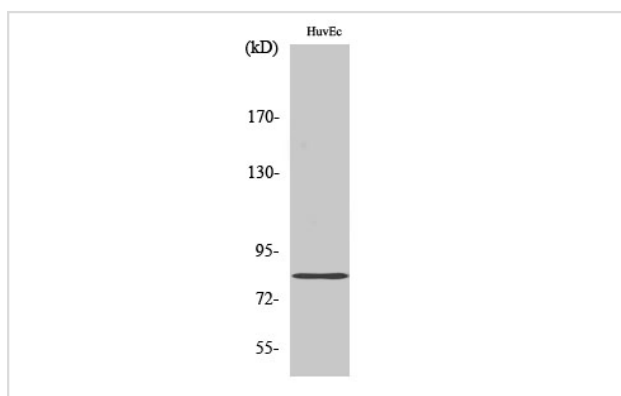
## Application Details

Western Blot: 1/500 - 1/2000.

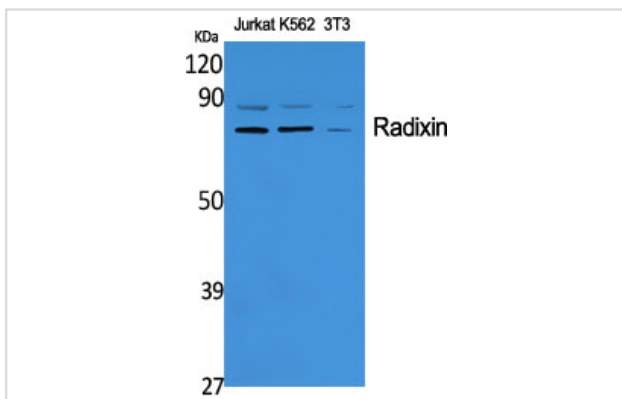
ELISA: 1/10000.

Not yet tested in other applications.

## Images



Western Blot analysis of HuvEc cells using Radixin Polyclonal Antibody



Western Blot analysis of Jurkat cells using Radixin Polyclonal Antibody

---

Note: This product is for in vitro research use only and is not intended for use in humans or animals.