

PTEN Polyclonal Antibody

Catalog No: #41367

Package Size: #41367-1 50ul #41367-2 100ul

Orders: order@signalwayantibody.comSupport: tech@signalwayantibody.com

Description

Product Name	PTEN Polyclonal Antibody
Host Species	Rabbit
Clonality	Polyclonal
Purification	The antibody was affinity-purified from rabbit antiserum by affinity-chromatography using epitope-specific immunogen.
Applications	WB IHC IF ELISA
Species Reactivity	Hu Ms Rt
Specificity	PTEN Polyclonal Antibody detects endogenous levels of PTEN protein.
Immunogen Type	peptide
Immunogen Description	Synthesized peptide derived from human PTEN around the non-phosphorylation site of S385.
Target Name	PTEN
Other Names	PTEN; MMAC1; TEP1; Phosphatidylinositol 3; 4,5-trisphosphate 3-phosphatase and dual-specificity protein phosphatase PTEN; Mutated in multiple advanced cancers 1; Phosphatase and tensin homolog
Accession No.	Swiss-Prot: P60484NCBI Gene ID: 5728
SDS-PAGE MW	30kd
Concentration	1mg/ml
Formulation	Liquid in PBS containing 50% glycerol, 0.5% BSA and 0.02% sodium azide.
Storage	Store at -20°C/1 year

Application Details

Western Blot: 1/500 - 1/2000.

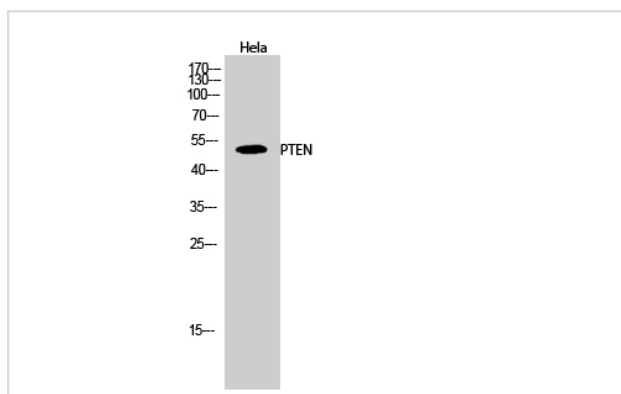
Immunohistochemistry: 1/100 - 1/300.

Immunofluorescence: 1/200 - 1/1000.

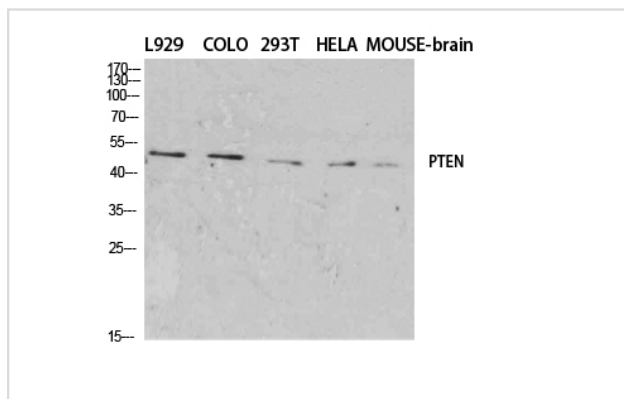
ELISA: 1/40000.

Not yet tested in other applications.

Images



Western Blot analysis of HeLa cells using PTEN Polyclonal Antibody



Western Blot analysis of L929 COLO 293T HELA
MOUSE-brain cells using PTEN Polyclonal Antibody

Note: This product is for in vitro research use only and is not intended for use in humans or animals.