

PKC Polyclonal Antibody

Catalog No: #41347



Package Size: #41347-1 50ul #41347-2 100ul

Orders: order@signalwayantibody.comSupport: tech@signalwayantibody.com

Description

Product Name	PKC Polyclonal Antibody
Host Species	Rabbit
Clonality	Polyclonal
Purification	The antibody was affinity-purified from rabbit antiserum by affinity-chromatography using epitope-specific immunogen.
Applications	WB IHC IF ELISA
Species Reactivity	Hu Ms Rt
Specificity	PKC Polyclonal Antibody detects endogenous levels of PKC protein.
Immunogen Type	peptide
Immunogen Description	Synthesized peptide derived from human PKC around the non-phosphorylation site of T497.
Target Name	PKC
Other Names	PRKCA; PKCA; PRKACA; Protein kinase C alpha type; PKC-A; PKC-alpha; PRKCB; PKCB; PRKCB1; Protein kinase C beta type; PKC-B; PKC-beta; PRKCD; Protein kinase C delta type; Tyrosine-protein kinase PRKCD; nPKC-delta; PRKCE; PKCE; Protein kinase
Accession No.	Swiss-Prot: P17252/P05771/Q05655/Q02156/P05129/P24723/Q04759/Q05513NCBI Gene ID: 5578/5579/5580/5581/5582/5583/5588/5590
SDS-PAGE MW	74kd
Concentration	1mg/ml
Formulation	Liquid in PBS containing 50% glycerol, 0.5% BSA and 0.02% sodium azide.
Storage	Store at -20°C/1 year

Application Details

Western Blot: 1/500 - 1/2000.

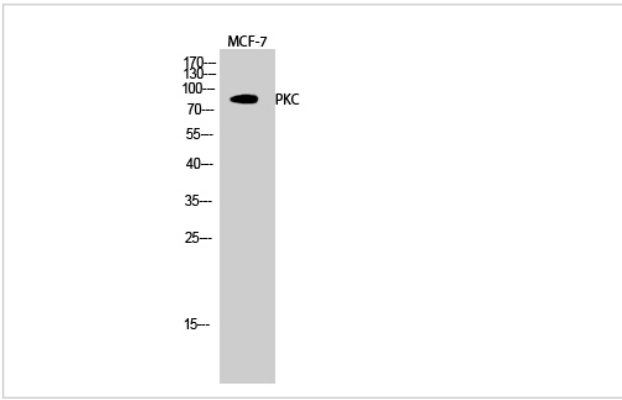
Immunohistochemistry: 1/100 - 1/300.

Immunofluorescence: 1/200 - 1/1000.

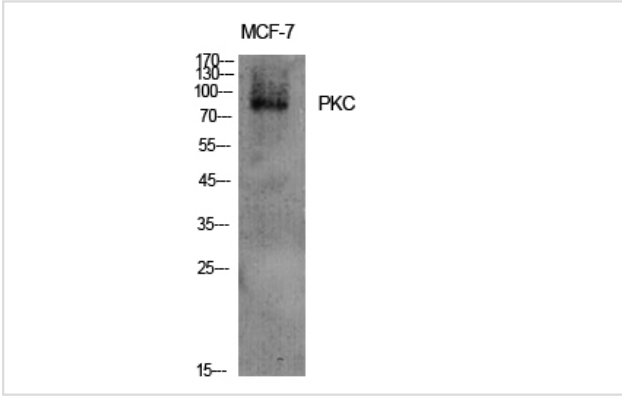
ELISA: 1/5000.

Not yet tested in other applications.

Images



Western Blot analysis of MCF-7 cells using PKC Polyclonal Antibody



Western Blot analysis of MCF-7 cells using PKC Polyclonal Antibody

Note: This product is for in vitro research use only and is not intended for use in humans or animals.