

Paxillin Polyclonal Antibody

Catalog No: #41323



Package Size: #41323-1 50ul #41323-2 100ul

Orders: order@signalwayantibody.comSupport: tech@signalwayantibody.com

Description

Product Name	Paxillin Polyclonal Antibody
Host Species	Rabbit
Clonality	Polyclonal
Purification	The antibody was affinity-purified from rabbit antiserum by affinity-chromatography using epitope-specific immunogen.
Applications	WB IHC IF ELISA
Species Reactivity	Hu Ms Rt Mk
Specificity	Paxillin Polyclonal Antibody detects endogenous levels of Paxillin protein.
Immunogen Type	peptide
Immunogen Description	Synthesized peptide derived from human Paxillin around the non-phosphorylation site of Y31.
Target Name	Paxillin
Other Names	PXN; Paxillin
Accession No.	Swiss-Prot: P49023NCBI Gene ID: 5829
SDS-PAGE MW	124kd
Concentration	1mg/ml
Formulation	Liquid in PBS containing 50% glycerol, 0.5% BSA and 0.02% sodium azide.
Storage	Store at -20°C/1 year

Application Details

Western Blot: 1/500 - 1/2000.

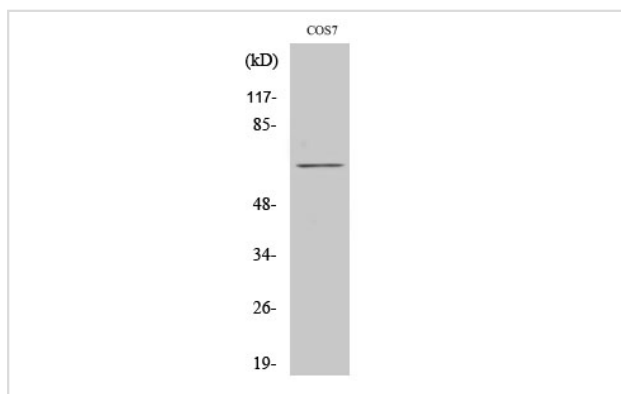
Immunohistochemistry: 1/100 - 1/300.

Immunofluorescence: 1/200 - 1/1000.

ELISA: 1/20000.

Not yet tested in other applications.

Images



Western Blot analysis of COS7 cells using Paxillin Polyclonal Antibody

Note: This product is for in vitro research use only and is not intended for use in humans or animals.