

OPN Polyclonal Antibody

Catalog No: #41290



Package Size: #41290-1 50ul #41290-2 100ul

Orders: order@signalwayantibody.comSupport: tech@signalwayantibody.com

Description

Product Name	OPN Polyclonal Antibody
Host Species	Rabbit
Clonality	Polyclonal
Purification	The antibody was affinity-purified from rabbit antiserum by affinity-chromatography using epitope-specific immunogen.
Applications	WB IHC ELISA
Species Reactivity	Hu Ms Rt
Specificity	OPN Polyclonal Antibody detects endogenous levels of OPN protein.
Immunogen Type	peptide
Immunogen Description	Synthesized peptide derived from the C-terminal region of human OPN.
Target Name	OPN
Other Names	SPP1; BNSP; OPN; PSEC0156; Osteopontin; Bone sialoprotein 1; Nephropontin; Secreted phosphoprotein 1; SPP-1; Urinary stone protein; Uropontin
Accession No.	Swiss-Prot: P10451NCBI Gene ID: 6696
SDS-PAGE MW	108kd
Concentration	1mg/ml
Formulation	Liquid in PBS containing 50% glycerol, 0.5% BSA and 0.02% sodium azide.
Storage	Store at -20°C/1 year

Application Details

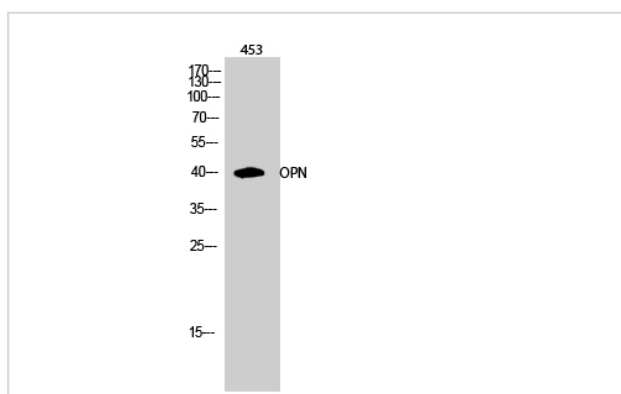
Western Blot: 1/500 - 1/2000.

Immunohistochemistry: 1/100 - 1/300.

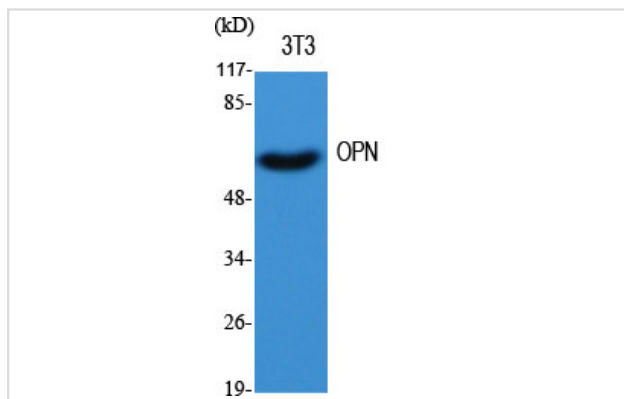
ELISA: 1/20000.

Not yet tested in other applications.

Images



Western Blot analysis of 453 cells using OPN Polyclonal Antibody



Western Blot analysis of NIH-3T3 cells using OPN Polyclonal Antibody

Note: This product is for in vitro research use only and is not intended for use in humans or animals.