

OPG Polyclonal Antibody

Catalog No: #41289



Package Size: #41289-1 50ul #41289-2 100ul

Orders: order@signalwayantibody.comSupport: tech@signalwayantibody.com

Description

Product Name	OPG Polyclonal Antibody
Host Species	Rabbit
Clonality	Polyclonal
Purification	The antibody was affinity-purified from rabbit antiserum by affinity-chromatography using epitope-specific immunogen.
Applications	WB IHC IF ELISA
Species Reactivity	Hu Ms
Specificity	OPG Polyclonal Antibody detects endogenous levels of OPG protein.
Immunogen Type	peptide
Immunogen Description	Synthesized peptide derived from the N-terminal region of human OPG.
Target Name	OPG
Other Names	TNFRSF11B; OCIF; OPG; Tumor necrosis factor receptor superfamily member 11B; Osteoclastogenesis inhibitory factor; Osteoprotegerin
Accession No.	Swiss-Prot: O00300NCBI Gene ID: 4982
SDS-PAGE MW	27kd
Concentration	1mg/ml
Formulation	Liquid in PBS containing 50% glycerol, 0.5% BSA and 0.02% sodium azide.
Storage	Store at -20°C/1 year

Application Details

Western Blot: 1/500 - 1/2000.

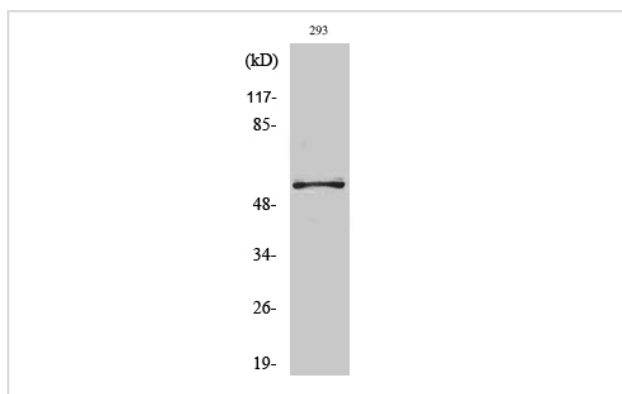
Immunohistochemistry: 1/100 - 1/300.

Immunofluorescence: 1/200 - 1/1000.

ELISA: 1/10000.

Not yet tested in other applications.

Images



Western Blot analysis of 293 cells using OPG Polyclonal Antibody

Note: This product is for in vitro research use only and is not intended for use in humans or animals.