

## OBCAM Polyclonal Antibody

Catalog No: #41261



Package Size: #41261-1 50ul #41261-2 100ul

Orders: [order@signalwayantibody.com](mailto:order@signalwayantibody.com)Support: [tech@signalwayantibody.com](mailto:tech@signalwayantibody.com)

## Description

Product Name	OBCAM Polyclonal Antibody
Host Species	Rabbit
Clonality	Polyclonal
Purification	The antibody was affinity-purified from rabbit antiserum by affinity-chromatography using epitope-specific immunogen.
Applications	WB ELISA
Species Reactivity	Hu Ms Rt Mk
Specificity	OBCAM Polyclonal Antibody detects endogenous levels of OBCAM protein.
Immunogen Type	peptide
Immunogen Description	Synthesized peptide derived from the Internal region of human OBCAM.
Target Name	OBCAM
Other Names	OPCML; IGLON1; OBCAM; Opioid-binding protein/cell adhesion molecule; OBCAM; OPCML; Opioid-binding cell adhesion molecule; IgLON family member 1
Accession No.	Swiss-Prot: Q14982NCBI Gene ID: 4978
SDS-PAGE MW	30kd
Concentration	1mg/ml
Formulation	Liquid in PBS containing 50% glycerol, 0.5% BSA and 0.02% sodium azide.
Storage	Store at -20°C/1 year

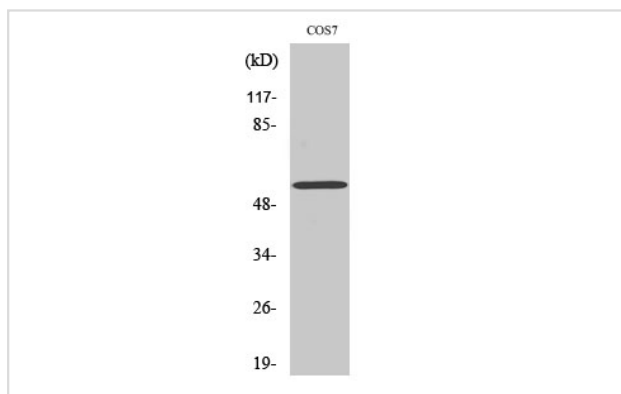
## Application Details

Western Blot: 1/500 - 1/2000.

ELISA: 1/10000.

Not yet tested in other applications.

## Images



Western Blot analysis of COS7 cells using OBCAM Polyclonal Antibody

---

Note: This product is for in vitro research use only and is not intended for use in humans or animals.