

NIPA Polyclonal Antibody

Catalog No: #41242



Package Size: #41242-1 50ul #41242-2 100ul

Orders: order@signalwayantibody.comSupport: tech@signalwayantibody.com

Description

Product Name	NIPA Polyclonal Antibody
Host Species	Rabbit
Clonality	Polyclonal
Purification	The antibody was affinity-purified from rabbit antiserum by affinity-chromatography using epitope-specific immunogen.
Applications	WB IF ELISA
Species Reactivity	Hu Ms Rt Mk
Specificity	NIPA Polyclonal Antibody detects endogenous levels of NIPA protein.
Immunogen Type	peptide
Immunogen Description	Synthesized peptide derived from human NIPA around the non-phosphorylation site of S354.
Target Name	NIPA
Other Names	ZC3HC1; NIPA; HSPC216; Nuclear-interacting partner of ALK; Nuclear-interacting partner of anaplastic lymphoma kinase; hNIPA; Zinc finger C3HC-type protein 1
Accession No.	Swiss-Prot: Q86WB0NCBI Gene ID: 51530
SDS-PAGE MW	170kd
Concentration	1mg/ml
Formulation	Liquid in PBS containing 50% glycerol, 0.5% BSA and 0.02% sodium azide.
Storage	Store at -20°C/1 year

Application Details

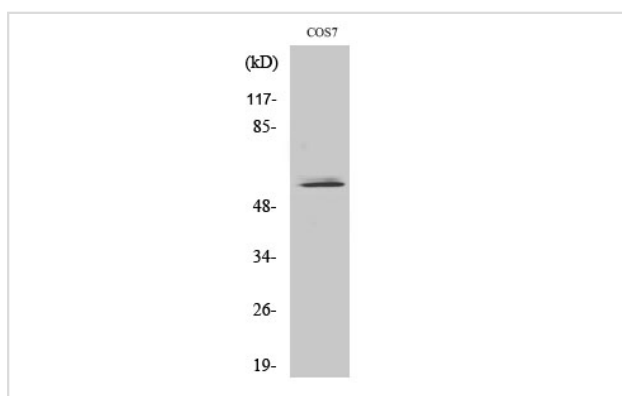
Western Blot: 1/500 - 1/2000.

Immunofluorescence: 1/200 - 1/1000.

ELISA: 1/40000.

Not yet tested in other applications.

Images



Western Blot analysis of COS7 cells using NIPA Polyclonal Antibody

Note: This product is for in vitro research use only and is not intended for use in humans or animals.