

NFκB-p105 Polyclonal Antibody

Catalog No: #41225



Package Size: #41225-1 50ul #41225-2 100ul

Orders: order@signalwayantibody.com

Support: tech@signalwayantibody.com

Description

Product Name	NFκB-p105 Polyclonal Antibody
Host Species	Rabbit
Clonality	Polyclonal
Purification	The antibody was affinity-purified from rabbit antiserum by affinity-chromatography using epitope-specific immunogen.
Applications	WB IHC IP ELISA
Species Reactivity	Hu
Specificity	NFκB-p105 Polyclonal Antibody detects endogenous levels of NFκB-p105 protein.
Immunogen Type	peptide
Immunogen Description	Synthesized peptide derived from human NFκB-p105 around the non-phosphorylation site of S907.
Target Name	NFκB-p105
Other Names	NFκB1; Nuclear factor NF-kappa-B p105 subunit; DNA-binding factor KBF1; EBP-1; Nuclear factor of kappa light polypeptide gene enhancer in B-cells 1
Accession No.	Swiss-Prot: P19838NCBI Gene ID: 4790
SDS-PAGE MW	60kd
Concentration	1mg/ml
Formulation	Liquid in PBS containing 50% glycerol, 0.5% BSA and 0.02% sodium azide.
Storage	Store at -20°C/1 year

Application Details

Western Blot: 1/500 - 1/2000.

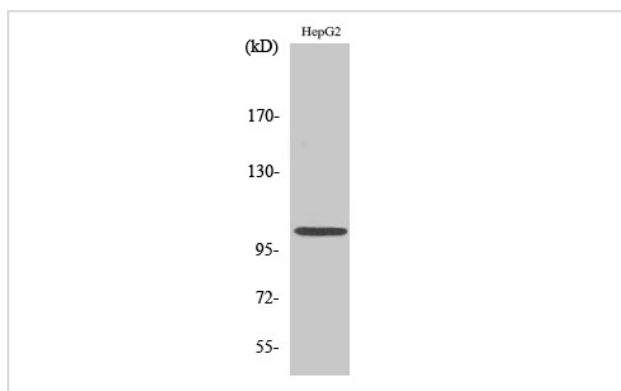
Immunohistochemistry: 1/100 - 1/300. Immunoprec

Immunoprecipitation: 2-5 ug/mg lysate.

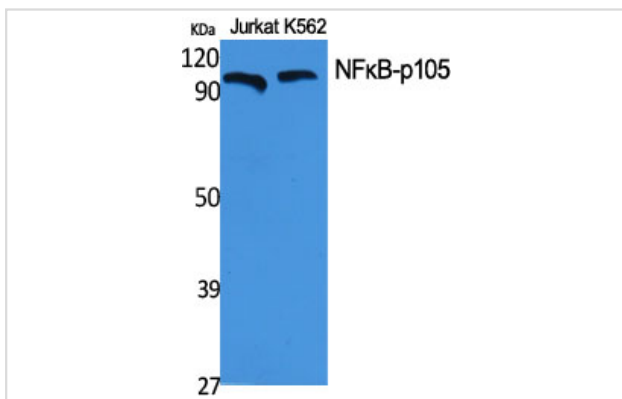
ELISA: 1/10000.

Not yet tested in other applications.

Images



Western Blot analysis of COLO205 cells using NFκB-p105 Polyclonal Antibody



Western Blot analysis of Jurkat K562 cells using NFκB-p105 Polyclonal Antibody

Note: This product is for in vitro research use only and is not intended for use in humans or animals.