

MYPT1 Polyclonal Antibody

Catalog No: #41196



Package Size: #41196-1 50ul #41196-2 100ul

Orders: order@signalwayantibody.comSupport: tech@signalwayantibody.com

Description

Product Name	MYPT1 Polyclonal Antibody
Host Species	Rabbit
Clonality	Polyclonal
Purification	The antibody was affinity-purified from rabbit antiserum by affinity-chromatography using epitope-specific immunogen.
Applications	WB IHC ELISA
Species Reactivity	Hu Ms Rt Mk
Specificity	MYPT1 Polyclonal Antibody detects endogenous levels of MYPT1 protein.
Immunogen Type	peptide
Immunogen Description	Synthesized peptide derived from human MYPT1 around the non-phosphorylation site of T696.
Target Name	MYPT1
Other Names	PPP1R12A; MBS; MYPT1; Protein phosphatase 1 regulatory subunit 12A; Myosin phosphatase-targeting subunit 1; Myosin phosphatase target subunit 1; Protein phosphatase myosin-binding subunit
Accession No.	Swiss-Prot: O14974NCBI Gene ID: 4659
SDS-PAGE MW	220kd
Concentration	1mg/ml
Formulation	Liquid in PBS containing 50% glycerol, 0.5% BSA and 0.02% sodium azide.
Storage	Store at -20°C/1 year

Application Details

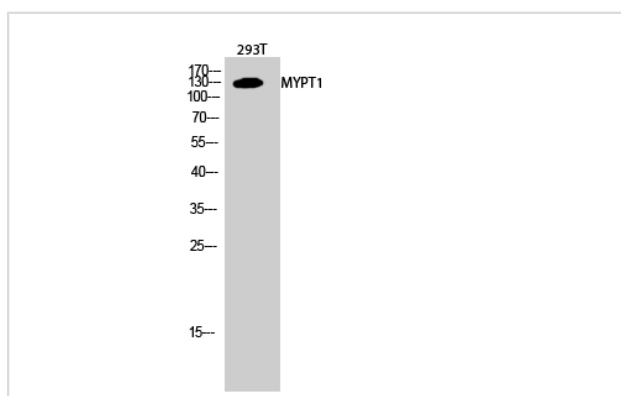
Western Blot: 1/500 - 1/2000.

Immunohistochemistry: 1/100 - 1/300.

ELISA: 1/5000.

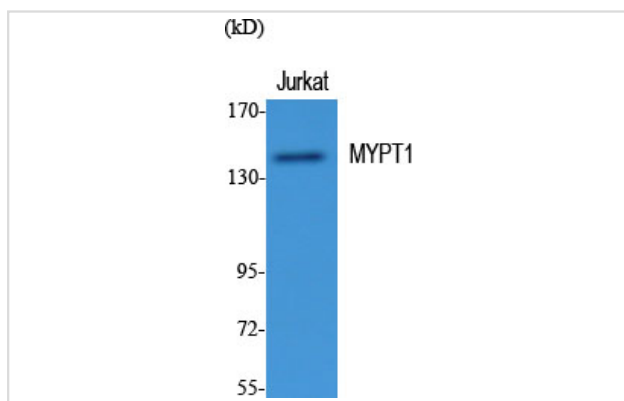
Not yet tested in other applications.

Images



Western Blot analysis of 293T cells using MYPT1 Polyclonal Antibody

Western Blot analysis of Jurkat cells using MYPT1 Polyclonal Antibody



Note: This product is for in vitro research use only and is not intended for use in humans or animals.