

Myotubularin Polyclonal Antibody

Catalog No: #41195



Package Size: #41195-1 50ul #41195-2 100ul

Orders: order@signalwayantibody.comSupport: tech@signalwayantibody.com

Description

Product Name	Myotubularin Polyclonal Antibody
Host Species	Rabbit
Clonality	Polyclonal
Purification	The antibody was affinity-purified from rabbit antiserum by affinity-chromatography using epitope-specific immunogen.
Applications	WB ELISA
Species Reactivity	Hu Ms
Specificity	Myotubularin Polyclonal Antibody detects endogenous levels of Myotubularin protein.
Immunogen Type	peptide
Immunogen Description	Synthesized peptide derived from the Internal region of human Myotubularin.
Target Name	Myotubularin
Other Names	MTM1; CG2; Myotubularin
Accession No.	Swiss-Prot: Q13496NCBI Gene ID: 4534
SDS-PAGE MW	21kd
Concentration	1mg/ml
Formulation	Liquid in PBS containing 50% glycerol, 0.5% BSA and 0.02% sodium azide.
Storage	Store at -20°C/1 year

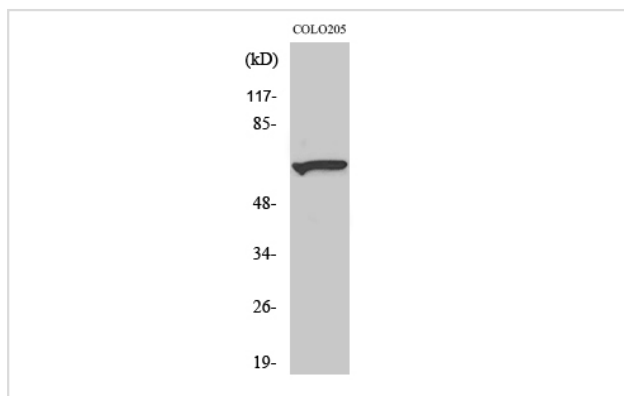
Application Details

Western Blot: 1/500 - 1/2000.

ELISA: 1/10000.

Not yet tested in other applications.

Images



Western Blot analysis of COLO205 cells using Myotubularin Polyclonal Antibody

Note: This product is for in vitro research use only and is not intended for use in humans or animals.