

Myomesin-2 Polyclonal Antibody

Catalog No: #41194



Package Size: #41194-1 50ul #41194-2 100ul

Orders: order@signalwayantibody.comSupport: tech@signalwayantibody.com

Description

Product Name	Myomesin-2 Polyclonal Antibody
Host Species	Rabbit
Clonality	Polyclonal
Purification	The antibody was affinity-purified from rabbit antiserum by affinity-chromatography using epitope-specific immunogen.
Applications	WB ELISA
Species Reactivity	Hu Ms Mk
Specificity	Myomesin-2 Polyclonal Antibody detects endogenous levels of Myomesin-2 protein.
Immunogen Type	peptide
Immunogen Description	Synthesized peptide derived from the Internal region of human Myomesin-2.
Target Name	Myomesin-2
Other Names	MYOM2; Myomesin-2; 165 kDa connectin-associated protein; 165 kDa titin-associated protein; M-protein; Myomesin family member 2
Accession No.	Swiss-Prot: P54296NCBI Gene ID: 9172
SDS-PAGE MW	82kd
Concentration	1mg/ml
Formulation	Liquid in PBS containing 50% glycerol, 0.5% BSA and 0.02% sodium azide.
Storage	Store at -20°C/1 year

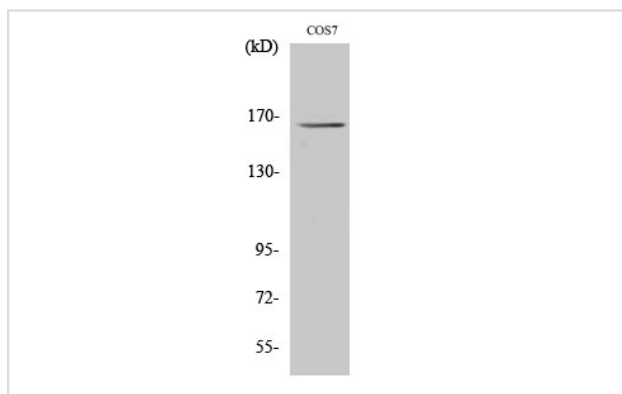
Application Details

Western Blot: 1/500 - 1/2000.

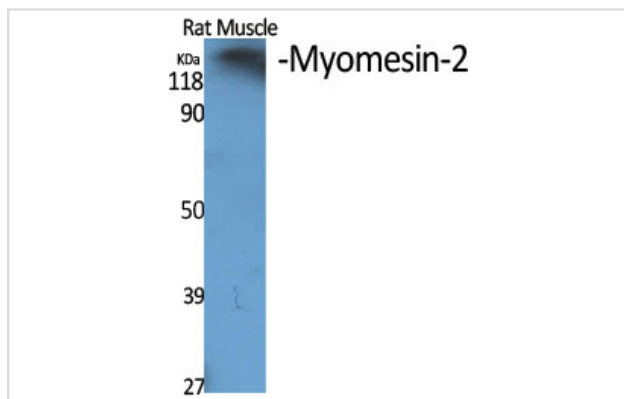
ELISA: 1/40000.

Not yet tested in other applications.

Images



Western Blot analysis of HT29 cells using Myomesin-2 Polyclonal Antibody



Western Blot analysis of RAT-MUSCLE cells using Myomesin-2 Polyclonal Antibody

Note: This product is for in vitro research use only and is not intended for use in humans or animals.