

## MYH Polyclonal Antibody

Catalog No: #41193



Package Size: #41193-1 50ul #41193-2 100ul

Orders: [order@signalwayantibody.com](mailto:order@signalwayantibody.com)Support: [tech@signalwayantibody.com](mailto:tech@signalwayantibody.com)

## Description

Product Name	MYH Polyclonal Antibody
Host Species	Rabbit
Clonality	Polyclonal
Purification	The antibody was affinity-purified from rabbit antiserum by affinity-chromatography using epitope-specific immunogen.
Applications	WB IHC IF ELISA
Species Reactivity	Hu Ms Rt
Specificity	MYH Polyclonal Antibody detects endogenous levels of MYH protein.
Immunogen Type	peptide
Immunogen Description	Synthesized peptide derived from the Internal region of human MYH.
Target Name	MYH
Other Names	MUTYH; MYH; A/G-specific adenine DNA glycosylase; MutY homolog; hMYH
Accession No.	Swiss-Prot: Q9UIF7NCBI Gene ID: 4595
SDS-PAGE MW	95kd
Concentration	1mg/ml
Formulation	Liquid in PBS containing 50% glycerol, 0.5% BSA and 0.02% sodium azide.
Storage	Store at -20°C/1 year

## Application Details

Western Blot: 1/500 - 1/2000.

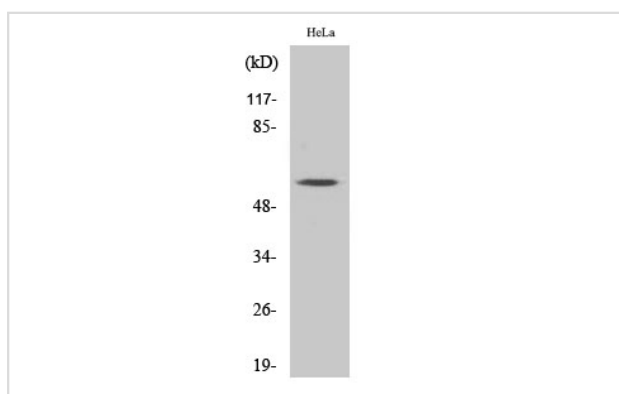
Immunohistochemistry: 1/100 - 1/300.

Immunofluorescence: 1/200 - 1/1000.

ELISA: 1/10000.

Not yet tested in other applications.

## Images



Western Blot analysis of HepG2 cells using MYH Polyclonal Antibody

---

Note: This product is for in vitro research use only and is not intended for use in humans or animals.