

MMP-2 Polyclonal Antibody

Catalog No: #41156



Package Size: #41156-1 50ul #41156-2 100ul

Orders: order@signalwayantibody.com

Support: tech@signalwayantibody.com

Description

Product Name	MMP-2 Polyclonal Antibody
Host Species	Rabbit
Clonality	Polyclonal
Purification	The antibody was affinity-purified from rabbit antiserum by affinity-chromatography using epitope-specific immunogen.
Applications	WB IHC IF ELISA
Species Reactivity	Hu Ms Rt Mk
Specificity	MMP-2 Polyclonal Antibody detects endogenous levels of MMP-2 protein.
Immunogen Type	peptide
Immunogen Description	Synthesized peptide derived from the C-terminal region of human MMP-2.
Target Name	MMP-2
Other Names	MMP2; CLG4A; 72 kDa type IV collagenase; 72 kDa gelatinase; Gelatinase A; Matrix metalloproteinase-2; MMP-2; TBE-1
Accession No.	Swiss-Prot: P08253NCBI Gene ID: 4313
SDS-PAGE MW	51kd
Concentration	1mg/ml
Formulation	Liquid in PBS containing 50% glycerol, 0.5% BSA and 0.02% sodium azide.
Storage	Store at -20°C/1 year

Application Details

Western Blot: 1/500 - 1/2000.

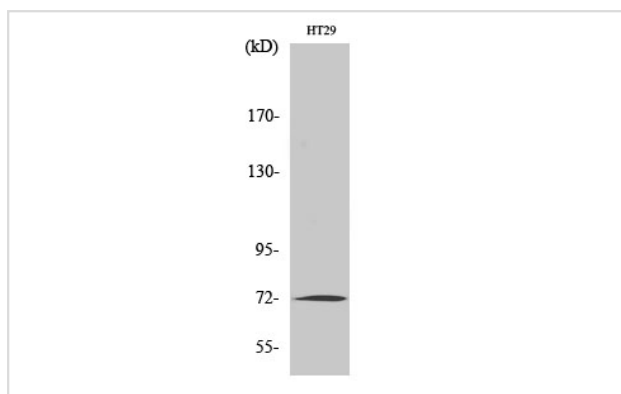
Immunohistochemistry: 1/100 - 1/300.

Immunofluorescence: 1/200 - 1/1000.

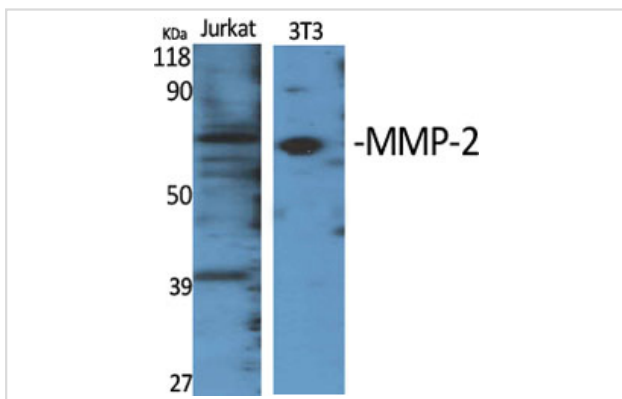
ELISA: 1/20000.

Not yet tested in other applications.

Images



Western Blot analysis of HT29 cells using MMP-2 Polyclonal Antibody



Western Blot analysis of Jurkat NIH-3T3 cells using MMP-2 Polyclonal Antibody

Note: This product is for in vitro research use only and is not intended for use in humans or animals.