

MKP-2 Polyclonal Antibody

Catalog No: #41148



Package Size: #41148-1 50ul #41148-2 100ul

Orders: order@signalwayantibody.comSupport: tech@signalwayantibody.com

Description

Product Name	MKP-2 Polyclonal Antibody
Host Species	Rabbit
Clonality	Polyclonal
Purification	The antibody was affinity-purified from rabbit antiserum by affinity-chromatography using epitope-specific immunogen.
Applications	WB IHC ELISA
Species Reactivity	Hu Ms Rt Mk
Specificity	MKP-2 Polyclonal Antibody detects endogenous levels of MKP-2 protein.
Immunogen Type	peptide
Immunogen Description	Synthesized peptide derived from the Internal region of human MKP-2.
Target Name	MKP-2
Other Names	DUSP4; MKP2; VH2; Dual specificity protein phosphatase 4; Dual specificity protein phosphatase hVH2; Mitogen-activated protein kinase phosphatase 2; MAP kinase phosphatase 2; MKP-2
Accession No.	Swiss-Prot: Q13115NCBI Gene ID: 1846
SDS-PAGE MW	54kd
Concentration	1mg/ml
Formulation	Liquid in PBS containing 50% glycerol, 0.5% BSA and 0.02% sodium azide.
Storage	Store at -20°C/1 year

Application Details

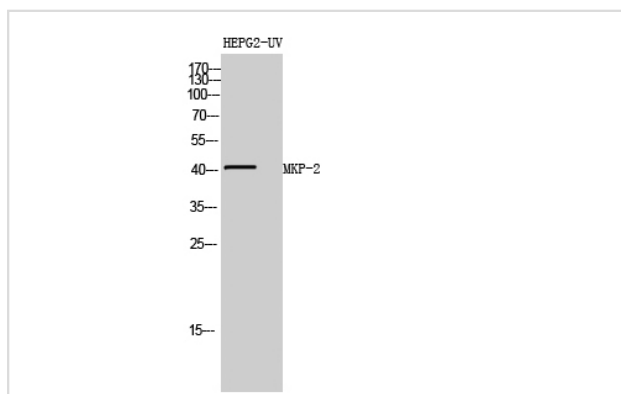
Western Blot: 1/500 - 1/2000.

Immunohistochemistry: 1/100 - 1/300.

ELISA: 1/20000.

Not yet tested in other applications.

Images



Western Blot analysis of HEPG2-UV cells using MKP-2 Polyclonal Antibody

Note: This product is for in vitro research use only and is not intended for use in humans or animals.