

## MITF Polyclonal Antibody

Catalog No: #41145



Package Size: #41145-1 50ul #41145-2 100ul

Orders: [order@signalwayantibody.com](mailto:order@signalwayantibody.com)Support: [tech@signalwayantibody.com](mailto:tech@signalwayantibody.com)

## Description

Product Name	MITF Polyclonal Antibody
Host Species	Rabbit
Clonality	Polyclonal
Purification	The antibody was affinity-purified from rabbit antiserum by affinity-chromatography using epitope-specific immunogen.
Applications	WB IHC IF ELISA
Species Reactivity	Hu Ms
Specificity	MITF Polyclonal Antibody detects endogenous levels of MITF protein.
Immunogen Type	peptide
Immunogen Description	Synthesized peptide derived from human MITF around the non-phosphorylation site of S180.
Target Name	MITF
Other Names	MITF; BHLHE32; Microphthalmia-associated transcription factor; Class E basic helix-loop-helix protein 32; bHLHe32
Accession No.	Swiss-Prot: O75030NCBI Gene ID: 4286
SDS-PAGE MW	42kd
Concentration	1mg/ml
Formulation	Liquid in PBS containing 50% glycerol, 0.5% BSA and 0.02% sodium azide.
Storage	Store at -20°C/1 year

## Application Details

Western Blot: 1/500 - 1/2000.

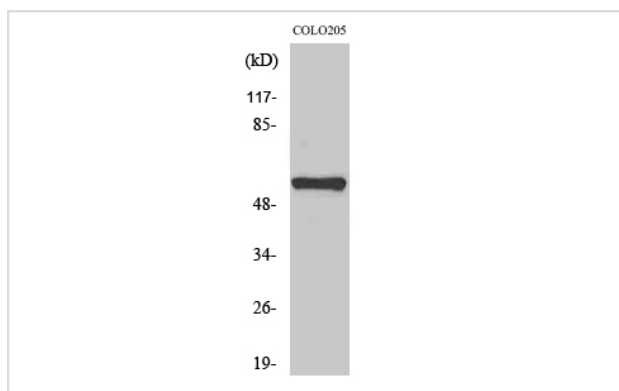
Immunohistochemistry: 1/100 - 1/300.

Immunofluorescence: 1/200 - 1/1000.

ELISA: 1/10000.

Not yet tested in other applications.

## Images



Western Blot analysis of COLO205 cells using MITF Polyclonal Antibody

---

Note: This product is for in vitro research use only and is not intended for use in humans or animals.