

MDM2 Polyclonal Antibody

Catalog No: #41127



Package Size: #41127-1 50ul #41127-2 100ul

Orders: order@signalwayantibody.comSupport: tech@signalwayantibody.com

Description

| | |
|-----------------------|---|
| Product Name | MDM2 Polyclonal Antibody |
| Host Species | Rabbit |
| Clonality | Polyclonal |
| Purification | The antibody was affinity-purified from rabbit antiserum by affinity-chromatography using epitope-specific immunogen. |
| Applications | WB IHC IF ELISA |
| Species Reactivity | Hu Ms Mk |
| Specificity | MDM2 Polyclonal Antibody detects endogenous levels of MDM2 protein. |
| Immunogen Type | peptide |
| Immunogen Description | Synthesized peptide derived from human MDM2 around the non-phosphorylation site of S166. |
| Target Name | MDM2 |
| Other Names | MDM2; E3 ubiquitin-protein ligase Mdm2; Double minute 2 protein; Hdm2; Oncoprotein Mdm2; p53-binding protein Mdm2 |
| Accession No. | Swiss-Prot: Q00987NCBI Gene ID: 4193 |
| SDS-PAGE MW | 51kd |
| Concentration | 1mg/ml |
| Formulation | Liquid in PBS containing 50% glycerol, 0.5% BSA and 0.02% sodium azide. |
| Storage | Store at -20°C/1 year |

Application Details

Western Blot: 1/500 - 1/2000.

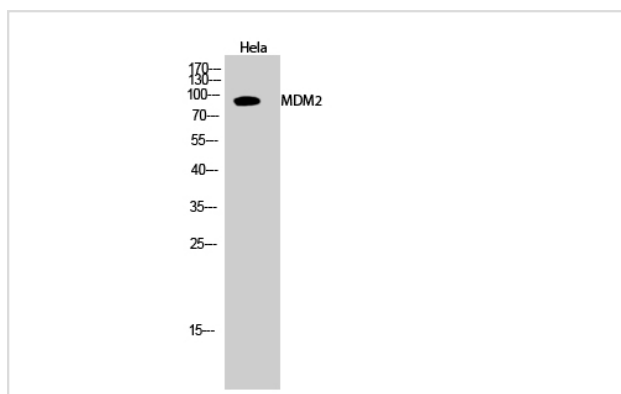
Immunohistochemistry: 1/100 - 1/300.

Immunofluorescence: 1/200 - 1/1000.

ELISA: 1/5000.

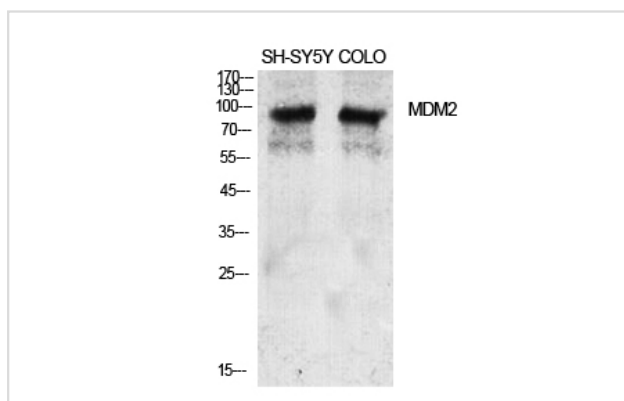
Not yet tested in other applications.

Images



Western Blot analysis of HeLa cells using MDM2 Polyclonal Antibody

Western Blot analysis of COLO SH-SY5Y cells using MDM2 Polyclonal Antibody



Note: This product is for in vitro research use only and is not intended for use in humans or animals.