

## MMP-7 Polyclonal Antibody

Catalog No: #41123



Package Size: #41123-1 50ul #41123-2 100ul

Orders: [order@signalwayantibody.com](mailto:order@signalwayantibody.com)Support: [tech@signalwayantibody.com](mailto:tech@signalwayantibody.com)

## Description

Product Name	MMP-7 Polyclonal Antibody
Host Species	Rabbit
Clonality	Polyclonal
Purification	The antibody was affinity-purified from rabbit antiserum by affinity-chromatography using epitope-specific immunogen.
Applications	WB IHC ELISA
Species Reactivity	Hu Ms Rt Mk
Specificity	MMP-7 Polyclonal Antibody detects endogenous levels of MMP-7 protein.
Immunogen Type	peptide
Immunogen Description	Synthesized peptide derived from the C-terminal region of human MMP-7.
Target Name	MMP-7
Other Names	MMP7; MPSL1; PUMP1; Matrilysin; Matrin; Matrix metalloproteinase-7; MMP-7; Pump-1 protease; Uterine metalloproteinase
Accession No.	Swiss-Prot: P09237NCBI Gene ID: 4316
SDS-PAGE MW	55+90kd
Concentration	1mg/ml
Formulation	Liquid in PBS containing 50% glycerol, 0.5% BSA and 0.02% sodium azide.
Storage	Store at -20°C/1 year

## Application Details

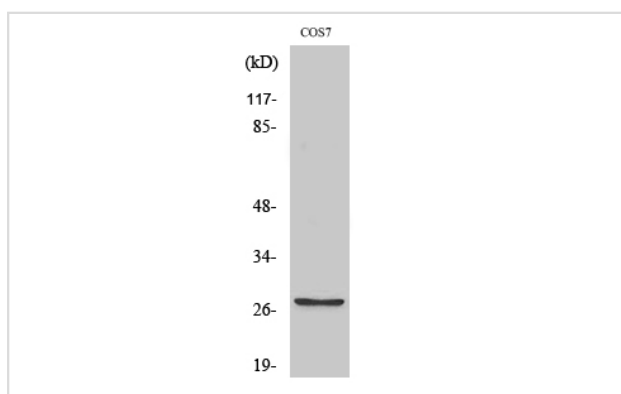
Western Blot: 1/500 - 1/2000.

Immunohistochemistry: 1/100 - 1/300.

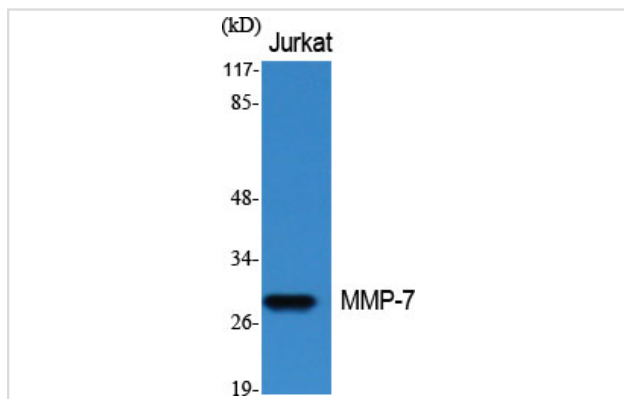
ELISA: 1/40000.

Not yet tested in other applications.

## Images



Western Blot analysis of COS7 cells using MMP-7 Polyclonal Antibody



Western Blot analysis of Jurkat cells using MMP-7 Polyclonal Antibody

---

Note: This product is for in vitro research use only and is not intended for use in humans or animals.