

## Lfc Polyclonal Antibody

Catalog No: #41105



Package Size: #41105-1 50ul #41105-2 100ul

Orders: [order@signalwayantibody.com](mailto:order@signalwayantibody.com)Support: [tech@signalwayantibody.com](mailto:tech@signalwayantibody.com)

## Description

Product Name	Lfc Polyclonal Antibody
Host Species	Rabbit
Clonality	Polyclonal
Purification	The antibody was affinity-purified from rabbit antiserum by affinity-chromatography using epitope-specific immunogen.
Applications	WB ELISA
Species Reactivity	Hu Ms Rt
Specificity	Lfc Polyclonal Antibody detects endogenous levels of Lfc protein.
Immunogen Type	peptide
Immunogen Description	Synthesized peptide derived from human Lfc around the non-phosphorylation site of S885.
Target Name	Lfc
Other Names	ARHGEF2; KIAA0651; LFP40; Rho guanine nucleotide exchange factor 2; Guanine nucleotide exchange factor H1; GEF-H1; Microtubule-regulated Rho-GEF; Proliferating cell nucleolar antigen p40
Accession No.	Swiss-Prot: Q92974NCBI Gene ID: 9181
SDS-PAGE MW	40kd
Concentration	1mg/ml
Formulation	Liquid in PBS containing 50% glycerol, 0.5% BSA and 0.02% sodium azide.
Storage	Store at -20°C/1 year

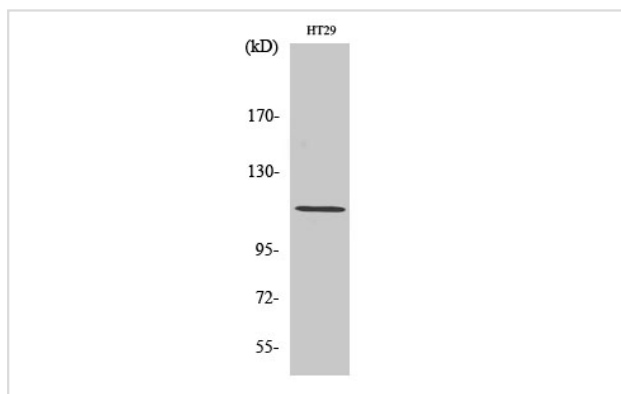
## Application Details

Western Blot: 1/500 - 1/2000.

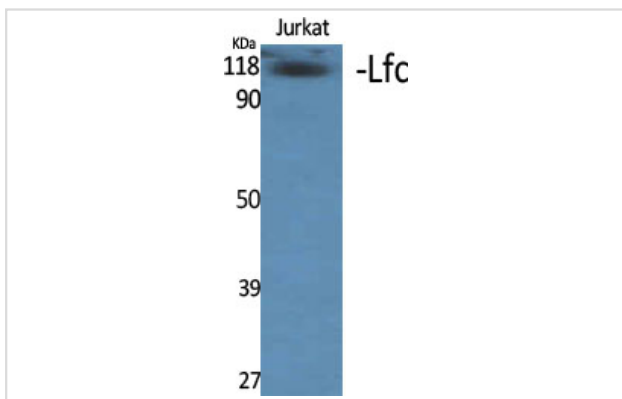
ELISA: 1/5000.

Not yet tested in other applications.

## Images



Western Blot analysis of HT29 cells using Lfc Polyclonal Antibody



Western Blot analysis of Jurkat cells using Lfc Polyclonal Antibody

---

Note: This product is for in vitro research use only and is not intended for use in humans or animals.