

KKIALRE Polyclonal Antibody

Catalog No: #41094



Package Size: #41094-1 50ul #41094-2 100ul

Orders: order@signalwayantibody.comSupport: tech@signalwayantibody.com

Description

Product Name	KKIALRE Polyclonal Antibody
Host Species	Rabbit
Clonality	Polyclonal
Purification	The antibody was affinity-purified from rabbit antiserum by affinity-chromatography using epitope-specific immunogen.
Applications	WB IHC ELISA
Species Reactivity	Hu Rt
Specificity	KKIALRE Polyclonal Antibody detects endogenous levels of KKIALRE protein.
Immunogen Type	peptide
Immunogen Description	Synthesized peptide derived from the C-terminal region of human KKIALRE.
Target Name	KKIALRE
Other Names	CDKL1; Cyclin-dependent kinase-like 1; Protein kinase p42 KKIALRE; Serine/threonine-protein kinase KKIALRE
Accession No.	Swiss-Prot: Q00532NCBI Gene ID: 8814
SDS-PAGE MW	70kd
Concentration	1mg/ml
Formulation	Liquid in PBS containing 50% glycerol, 0.5% BSA and 0.02% sodium azide.
Storage	Store at -20°C/1 year

Application Details

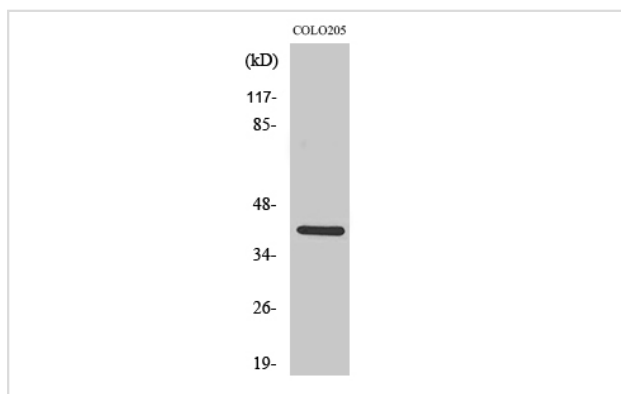
Western Blot: 1/500 - 1/2000.

Immunohistochemistry: 1/100 - 1/300.

ELISA: 1/10000.

Not yet tested in other applications.

Images



Western Blot analysis of COLO205 cells using KKIALRE Polyclonal Antibody

Note: This product is for in vitro research use only and is not intended for use in humans or animals.