

Ki-67 Polyclonal Antibody

Catalog No: #41092



Package Size: #41092-1 50ul #41092-2 100ul

Orders: order@signalwayantibody.comSupport: tech@signalwayantibody.com

Description

Product Name	Ki-67 Polyclonal Antibody
Host Species	Rabbit
Clonality	Polyclonal
Purification	The antibody was affinity-purified from rabbit antiserum by affinity-chromatography using epitope-specific immunogen.
Applications	WB IHC IF ELISA
Species Reactivity	Hu
Specificity	Ki-67 Polyclonal Antibody detects endogenous levels of Ki-67 protein.
Immunogen Type	peptide
Immunogen Description	Synthesized peptide derived from the C-terminal region of human Ki-67.
Target Name	Ki-67
Other Names	MKI67; Antigen KI-67
Accession No.	Swiss-Prot: P46013NCBI Gene ID: 4288
SDS-PAGE MW	57kd
Concentration	1mg/ml
Formulation	Liquid in PBS containing 50% glycerol, 0.5% BSA and 0.02% sodium azide.
Storage	Store at -20°C/1 year

Application Details

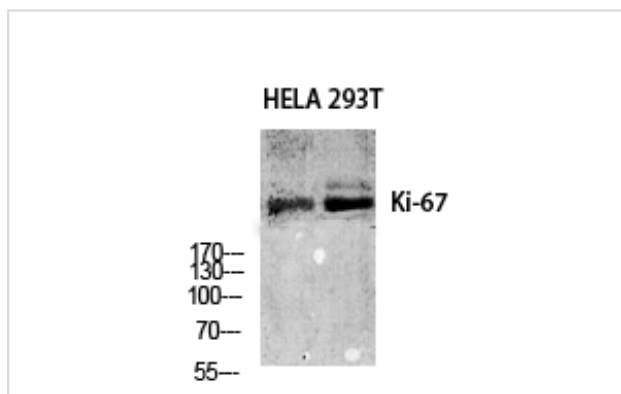
Western Blot: 1:500-2000

Immunohistochemistry: 1/100 - 1/300

Immunofluorescence: 1/200 - 1/1000

ELISA: 1/20000

Images



Western Blot analysis of HELA 293T cells using Ki-67 Polyclonal Antibody

Note: This product is for in vitro research use only and is not intended for use in humans or animals.