

Kanadaptin Polyclonal Antibody

Catalog No: #41088



Package Size: #41088-1 50ul #41088-2 100ul

Orders: order@signalwayantibody.comSupport: tech@signalwayantibody.com

Description

Product Name	Kanadaptin Polyclonal Antibody
Host Species	Rabbit
Clonality	Polyclonal
Purification	The antibody was affinity-purified from rabbit antiserum by affinity-chromatography using epitope-specific immunogen.
Applications	WB IHC IF ELISA
Species Reactivity	Hu Ms
Specificity	Kanadaptin Polyclonal Antibody detects endogenous levels of Kanadaptin protein.
Immunogen Type	peptide
Immunogen Description	Synthesized peptide derived from the Internal region of human Kanadaptin.
Target Name	Kanadaptin
Other Names	SLC4A1AP; HLC3; Kanadaptin; Human lung cancer oncogene 3 protein; HLC-3; Kidney anion exchanger adapter protein; Solute carrier family 4 anion exchanger member 1 adapter protein
Accession No.	Swiss-Prot: Q9BWU0NCBI Gene ID: 22950
SDS-PAGE MW	360kd
Concentration	1mg/ml
Formulation	Liquid in PBS containing 50% glycerol, 0.5% BSA and 0.02% sodium azide.
Storage	Store at -20°C/1 year

Application Details

Western Blot: 1/500 - 1/2000.

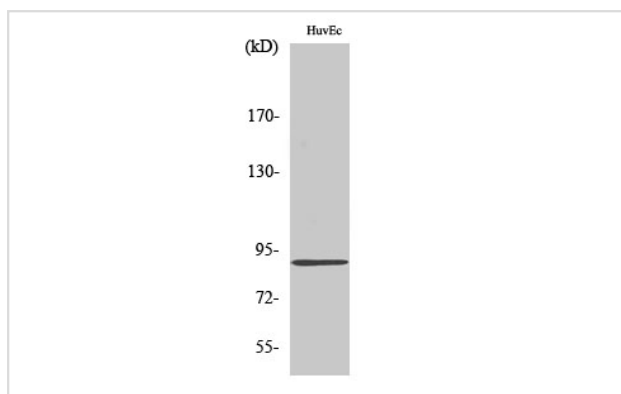
Immunohistochemistry: 1/100 - 1/300.

Immunofluorescence: 1/200 - 1/1000.

ELISA: 1/10000.

Not yet tested in other applications.

Images



Western Blot analysis of HuvEc cells using Kanadaptin Polyclonal Antibody

Note: This product is for in vitro research use only and is not intended for use in humans or animals.