

## HisRS Polyclonal Antibody

Catalog No: #41006



Package Size: #41006-1 50ul #41006-2 100ul

Orders: [order@signalwayantibody.com](mailto:order@signalwayantibody.com)Support: [tech@signalwayantibody.com](mailto:tech@signalwayantibody.com)

## Description

Product Name	HisRS Polyclonal Antibody
Host Species	Rabbit
Clonality	Polyclonal
Purification	The antibody was affinity-purified from rabbit antiserum by affinity-chromatography using epitope-specific immunogen.
Applications	WB IHC IF ELISA
Species Reactivity	Hu Ms
Specificity	HisRS Polyclonal Antibody detects endogenous levels of HisRS protein.
Immunogen Type	peptide
Immunogen Description	Synthesized peptide derived from the C-terminal region of human HisRS.
Target Name	HisRS
Other Names	HARS; HRS; Histidine--tRNA ligase; cytoplasmic; Histidyl-tRNA synthetase; HisRS
Accession No.	Swiss-Prot: P12081NCBI Gene ID: 3035
SDS-PAGE MW	75kd
Concentration	1mg/ml
Formulation	Liquid in PBS containing 50% glycerol, 0.5% BSA and 0.02% sodium azide.
Storage	Store at -20°C/1 year

## Application Details

Western Blot: 1/500 - 1/2000.

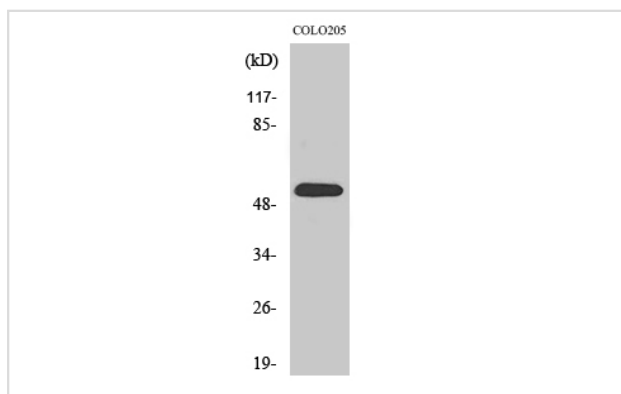
Immunohistochemistry: 1/100 - 1/300.

Immunofluorescence: 1/200 - 1/1000.

ELISA: 1/20000.

Not yet tested in other applications.

## Images



Western Blot analysis of COLO205 cells using HisRS Polyclonal Antibody

---

Note: This product is for in vitro research use only and is not intended for use in humans or animals.