

HDAC2 Polyclonal Antibody

Catalog No: #40995



Package Size: #40995-1 50ul #40995-2 100ul

Orders: order@signalwayantibody.comSupport: tech@signalwayantibody.com

Description

| | |
|-----------------------|---|
| Product Name | HDAC2 Polyclonal Antibody |
| Host Species | Rabbit |
| Clonality | Polyclonal |
| Purification | The antibody was affinity-purified from rabbit antiserum by affinity-chromatography using epitope-specific immunogen. |
| Applications | WB IHC ELISA |
| Species Reactivity | Hu Ms Rt Mk |
| Specificity | HDAC2 Polyclonal Antibody detects endogenous levels of HDAC2 protein. |
| Immunogen Type | peptide |
| Immunogen Description | Synthesized peptide derived from human HDAC2 around the non-phosphorylation site of S394. |
| Target Name | HDAC2 |
| Other Names | HDAC2; Histone deacetylase 2; HD2 |
| Accession No. | Swiss-Prot: Q92769NCBI Gene ID: 3066 |
| SDS-PAGE MW | 131kd |
| Concentration | 1mg/ml |
| Formulation | Liquid in PBS containing 50% glycerol, 0.5% BSA and 0.02% sodium azide. |
| Storage | Store at -20°C/1 year |

Application Details

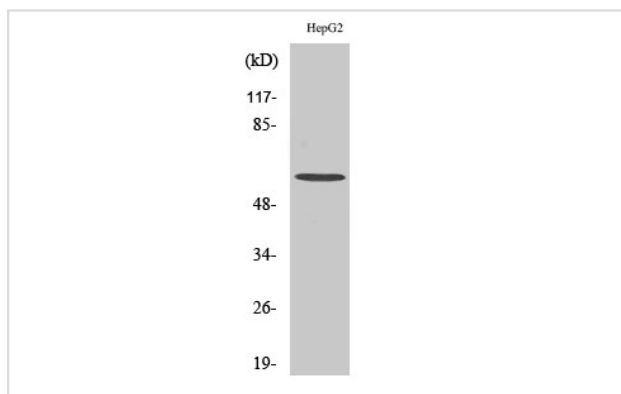
Western Blot: 1/500 - 1/2000.

Immunohistochemistry: 1/100 - 1/300.

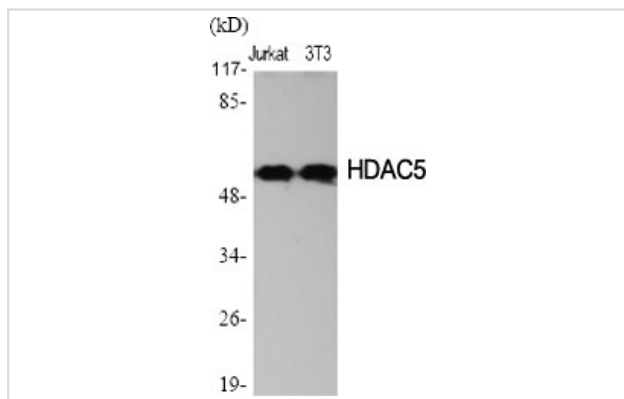
ELISA: 1/40000.

Not yet tested in other applications.

Images



Western Blot analysis of HepG2 cells using HDAC2 Polyclonal Antibody



Western Blot analysis of Jurkat NIH-3T3 cells using HDAC2 Polyclonal Antibody

Note: This product is for in vitro research use only and is not intended for use in humans or animals.