

GSK3 $\beta$  Polyclonal Antibody

Catalog No: #40989



Package Size: #40989-1 50ul #40989-2 100ul

Orders: order@signalwayantibody.com

Support: tech@signalwayantibody.com

## Description

Product Name	GSK3 $\beta$ Polyclonal Antibody
Host Species	Rabbit
Clonality	Polyclonal
Purification	The antibody was affinity-purified from rabbit antiserum by affinity-chromatography using epitope-specific immunogen.
Applications	WB IHC IP ELISA
Species Reactivity	Hu Ms Rt
Specificity	GSK3 $\beta$ Polyclonal Antibody detects endogenous levels of GSK3 $\beta$ protein.
Immunogen Type	peptide
Immunogen Description	Synthesized peptide derived from human GSK3 $\beta$ around the non-phosphorylation site of S9.
Target Name	GSK3 $\beta$
Other Names	GSK3B; Glycogen synthase kinase-3 beta; GSK-3 beta; Serine/threonine-protein kinase GSK3B
Accession No.	Swiss-Prot: P49841NCBI Gene ID: 2932
SDS-PAGE MW	75kd
Concentration	1mg/ml
Formulation	Liquid in PBS containing 50% glycerol, 0.5% BSA and 0.02% sodium azide.
Storage	Store at -20°C/1 year

## Application Details

Western Blot: 1/500 - 1/2000.

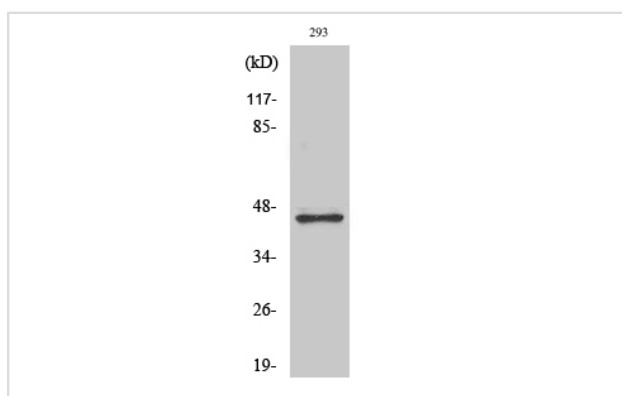
Immunohistochemistry: 1/100 - 1/300. Immunoprec

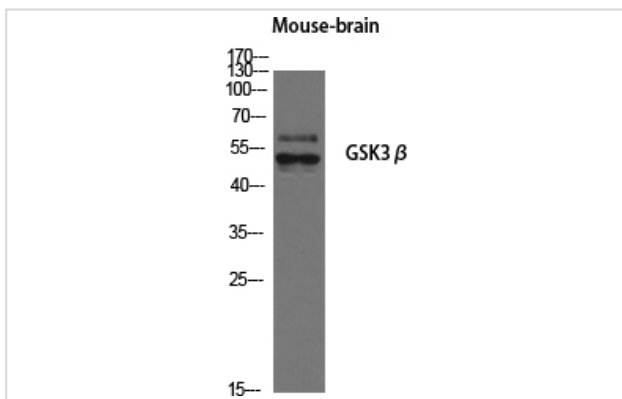
Immunoprecipitation: 2-5 ug/mg lysate.

ELISA: 1/20000.

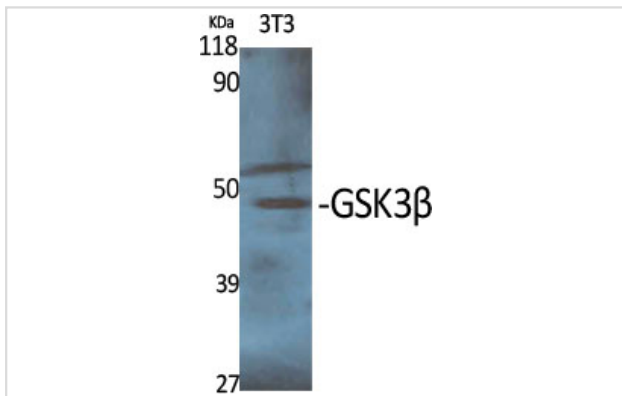
Not yet tested in other applications.

## Images

Western Blot analysis of HT29 cells using GSK3 $\beta$  Polyclonal Antibody



Western Blot analysis of NIH-3T3 cells using GSK3 $\beta$   
Polyclonal Antibody



Western Blot analysis of MOUSE-BRAIN cells using GSK3 $\beta$   
Polyclonal Antibody

---

Note: This product is for in vitro research use only and is not intended for use in humans or animals.