

## GPR101 Polyclonal Antibody

Catalog No: #40970



Package Size: #40970-1 50ul #40970-2 100ul

Orders: [order@signalwayantibody.com](mailto:order@signalwayantibody.com)Support: [tech@signalwayantibody.com](mailto:tech@signalwayantibody.com)

## Description

Product Name	GPR101 Polyclonal Antibody
Host Species	Rabbit
Clonality	Polyclonal
Purification	The antibody was affinity-purified from rabbit antiserum by affinity-chromatography using epitope-specific immunogen.
Applications	WB IF ELISA
Species Reactivity	Hu Ms Mk
Specificity	GPR101 Polyclonal Antibody detects endogenous levels of GPR101 protein.
Immunogen Type	peptide
Immunogen Description	Synthesized peptide derived from the C-terminal region of human GPR101.
Target Name	GPR101
Other Names	GPR101; Probable G-protein coupled receptor 101
Accession No.	Swiss-Prot: Q96P66NCBI Gene ID: 83550
SDS-PAGE MW	38kd
Concentration	1mg/ml
Formulation	Liquid in PBS containing 50% glycerol, 0.5% BSA and 0.02% sodium azide.
Storage	Store at -20°C/1 year

## Application Details

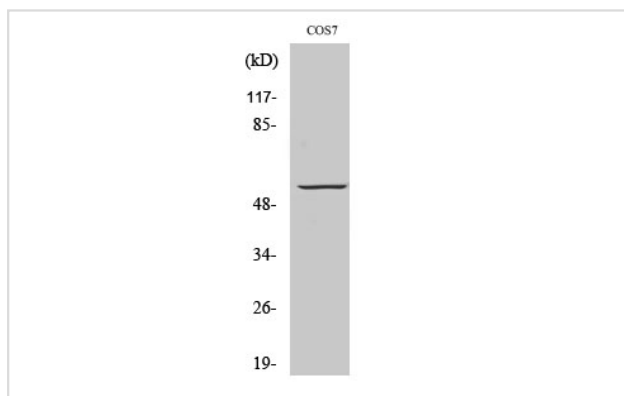
Western Blot: 1/500 - 1/2000.

Immunofluorescence: 1/200 - 1/1000.

ELISA: 1/5000.

Not yet tested in other applications.

## Images



Western Blot analysis of COS7 cells using GPR101 Polyclonal Antibody

---

Note: This product is for in vitro research use only and is not intended for use in humans or animals.