

GCSm- γ Polyclonal Antibody

Catalog No: #40959



Package Size: #40959-1 50ul #40959-2 100ul

Orders: order@signalwayantibody.comSupport: tech@signalwayantibody.com

Description

Product Name	GCSm- γ Polyclonal Antibody
Host Species	Rabbit
Clonality	Polyclonal
Purification	The antibody was affinity-purified from rabbit antiserum by affinity-chromatography using epitope-specific immunogen.
Applications	WB IHC ELISA
Species Reactivity	Hu Ms Rt Mk
Specificity	GCSm- γ Polyclonal Antibody detects endogenous levels of GCSm- γ protein.
Immunogen Type	peptide
Immunogen Description	Synthesized peptide derived from the Internal region of human GCSm- γ .
Target Name	GCSm- γ
Other Names	GCLM; GLCLR; Glutamate--cysteine ligase regulatory subunit; GCS light chain; Gamma-ECS regulatory subunit; Gamma-glutamylcysteine synthetase regulatory subunit; Glutamate--cysteine ligase modifier subunit
Accession No.	Swiss-Prot: P48507NCBI Gene ID: 2730
SDS-PAGE MW	84kd
Concentration	1mg/ml
Formulation	Liquid in PBS containing 50% glycerol, 0.5% BSA and 0.02% sodium azide.
Storage	Store at -20°C/1 year

Application Details

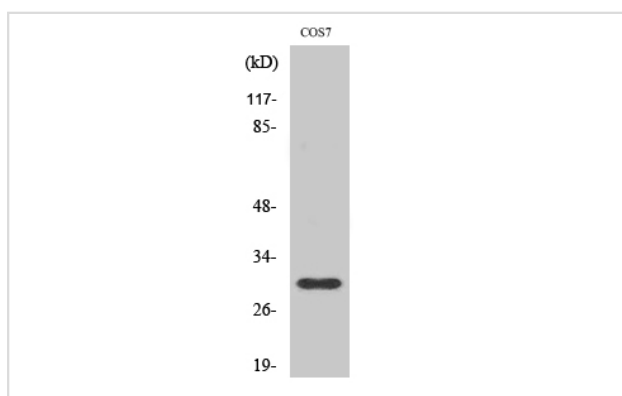
Western Blot: 1/500 - 1/2000.

Immunohistochemistry: 1/100 - 1/300.

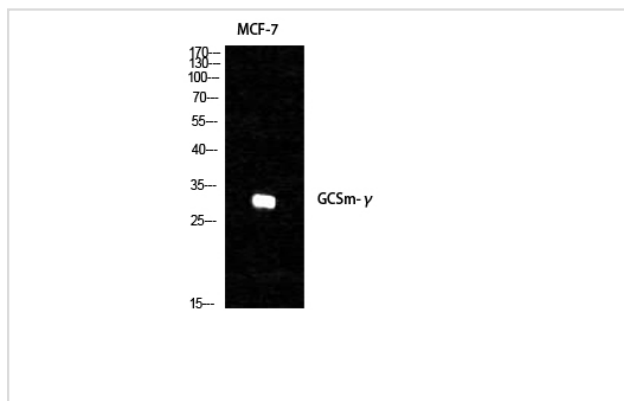
ELISA: 1/10000.

Not yet tested in other applications.

Images

Western Blot analysis of COS7 cells using GCSm- γ Polyclonal Antibody

Western Blot analysis of MCF-7 cells using GCSm- γ Polyclonal Antibody



Note: This product is for in vitro research use only and is not intended for use in humans or animals.