

FSHR Polyclonal Antibody

Catalog No: #40941



Package Size: #40941-1 50ul #40941-2 100ul

Orders: order@signalwayantibody.comSupport: tech@signalwayantibody.com

Description

Product Name	FSHR Polyclonal Antibody
Host Species	Rabbit
Clonality	Polyclonal
Purification	The antibody was affinity-purified from rabbit antiserum by affinity-chromatography using epitope-specific immunogen.
Applications	WB IF ELISA
Species Reactivity	Hu Ms Rt
Specificity	FSHR Polyclonal Antibody detects endogenous levels of FSHR protein.
Immunogen Type	peptide
Immunogen Description	Synthesized peptide derived from the Internal region of human FSHR.
Target Name	FSHR
Other Names	FSHR; LGR1; Follicle-stimulating hormone receptor; FSH-R; Follitropin receptor
Accession No.	Swiss-Prot: P23945NCBI Gene ID: 2492
SDS-PAGE MW	110kd
Concentration	1mg/ml
Formulation	Liquid in PBS containing 50% glycerol, 0.5% BSA and 0.02% sodium azide.
Storage	Store at -20°C/1 year

Application Details

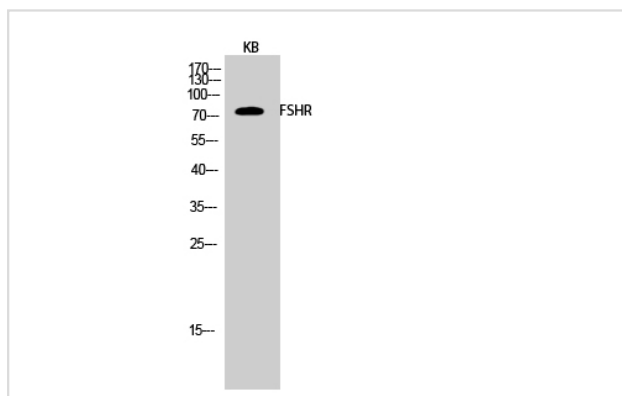
Western Blot: 1/500 - 1/2000.

Immunofluorescence: 1/200 - 1/1000.

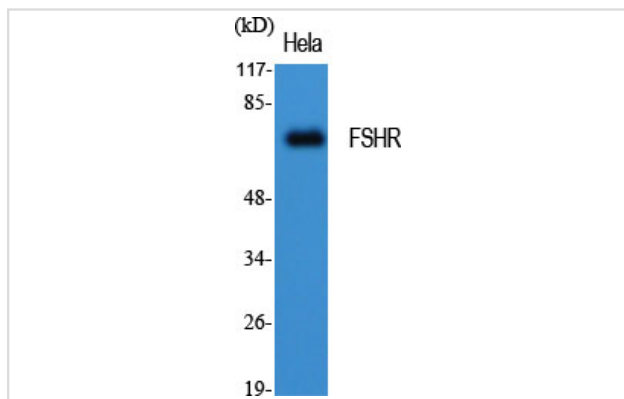
ELISA: 1/5000.

Not yet tested in other applications.

Images



Western Blot analysis of KB cells using FSHR Polyclonal Antibody



Western Blot analysis of HeLa cells using FSHR Polyclonal Antibody

Note: This product is for in vitro research use only and is not intended for use in humans or animals.