

## Flg Polyclonal Antibody

Catalog No: #40928



Package Size: #40928-1 50ul #40928-2 100ul

Orders: [order@signalwayantibody.com](mailto:order@signalwayantibody.com)Support: [tech@signalwayantibody.com](mailto:tech@signalwayantibody.com)

## Description

Product Name	Flg Polyclonal Antibody
Host Species	Rabbit
Clonality	Polyclonal
Purification	The antibody was affinity-purified from rabbit antiserum by affinity-chromatography using epitope-specific immunogen.
Applications	WB IF ELISA
Species Reactivity	Hu Ms Rt
Specificity	Flg Polyclonal Antibody detects endogenous levels of Flg protein.
Immunogen Type	peptide
Immunogen Description	Synthesized peptide derived from human Flg around the non-phosphorylation site of Y654.
Target Name	Flg
Other Names	FGFR1; BFGFR; CEK; FGFBR; FLG; FLT2; HBGFR; Fibroblast growth factor receptor 1; FGFR-1; Basic fibroblast growth factor receptor 1; BFGFR; bFGF-R-1; Fms-like tyrosine kinase 2; FLT-2; N-sam; Proto-oncogene c-Fgr; CD antigen CD331
Accession No.	Swiss-Prot: P11362NCBI Gene ID: 2260
SDS-PAGE MW	260kd
Concentration	1mg/ml
Formulation	Liquid in PBS containing 50% glycerol, 0.5% BSA and 0.02% sodium azide.
Storage	Store at -20°C/1 year

## Application Details

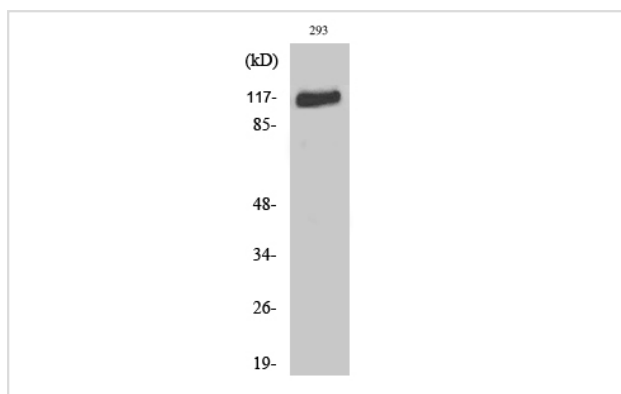
Western Blot: 1/500 - 1/2000.

Immunofluorescence: 1/200 - 1/1000.

ELISA: 1/5000.

Not yet tested in other applications.

## Images



Western Blot analysis of 293 cells using Flg Polyclonal Antibody

---

Note: This product is for in vitro research use only and is not intended for use in humans or animals.