

# Fer Polyclonal Antibody

Catalog No: #40923



Package Size: #40923-1 50ul #40923-2 100ul

Orders: [order@signalwayantibody.com](mailto:order@signalwayantibody.com)Support: [tech@signalwayantibody.com](mailto:tech@signalwayantibody.com)

## Description

Product Name	Fer Polyclonal Antibody
Host Species	Rabbit
Clonality	Polyclonal
Purification	The antibody was affinity-purified from rabbit antiserum by affinity-chromatography using epitope-specific immunogen.
Applications	WB ELISA
Species Reactivity	Hu Ms
Specificity	Fer Polyclonal Antibody detects endogenous levels of Fer protein.
Immunogen Type	peptide
Immunogen Description	Synthesized peptide derived from human Fer around the non-phosphorylation site of Y402.
Target Name	Fer
Other Names	FER; TYK3; Tyrosine-protein kinase Fer; Feline encephalitis virus-related kinase FER; Fujinami poultry sarcoma/Feline sarcoma-related protein Fer; Proto-oncogene c-Fer; Tyrosine kinase 3; p94-Fer
Accession No.	Swiss-Prot: P16591NCBI Gene ID: 2241
SDS-PAGE MW	280kd
Concentration	1mg/ml
Formulation	Liquid in PBS containing 50% glycerol, 0.5% BSA and 0.02% sodium azide.
Storage	Store at -20°C/1 year

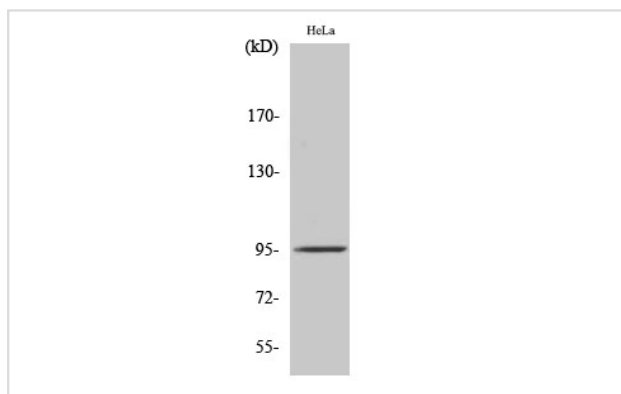
## Application Details

Western Blot: 1/500 - 1/2000.

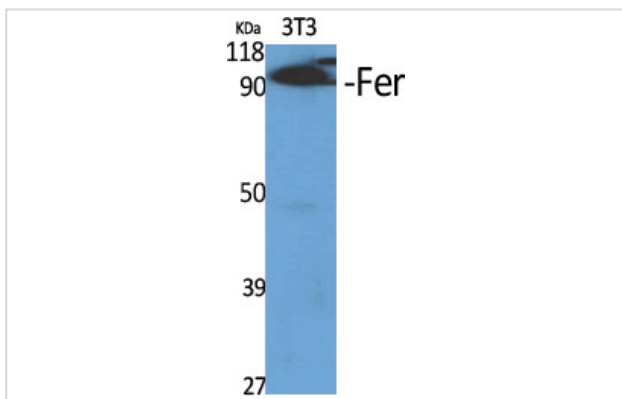
ELISA: 1/40000.

Not yet tested in other applications.

## Images



Western Blot analysis of HeLa cells using Fer Polyclonal Antibody



Western Blot analysis of NIH-3T3 cells using Fer Polyclonal Antibody

Note: This product is for in vitro research use only and is not intended for use in humans or animals.